



In the February 2017 newsletter, I provided an update on the Secretary's Environmental Assessment Requirements for the Project issued to us by the Department of Planning and Environment (DPE). This Project Information Sheet outlines the aspects we are to address as a team during the preparation of the Environmental Impact Statement (EIS). I also presented the results of our drilling program, outlined a number of community organisations that we have supported, introduced our Community Consultative Committee and also some of the members of our Project team.

This Information Sheet focuses on:

- providing further detail on our proposed Project, including key project features;
- outlining the assessment process we have commenced and the key studies to be undertaken as part of the EIS over the coming months;
- identifying how people can provide input to the Project during the assessment phase through our social impact assessment program; and
- providing a summary of some of the issues that we have documented through our initial Project discussions with local landholders and residents in close proximity to our proposed Mine Site.

As always, I welcome community input and look forward to future opportunities to meet our neighbours and local residents personally.

If you have any questions, we have an open door policy, so please don't hesitate to call or get in touch by email or through our website.

Anthony McClure
Director

What is being proposed?

Bowdens Silver proposes to develop a silver mine located about 2.5km northeast of Lue village in the Mid-Western Local Government Area of New South Wales.

The current plan is to extract and process approximately 2 million tonnes per annum (Mtpa) of silver ore over a mine life of at least 17 years.

The proposed mining method is an open cut pit involving blasting, loading and hauling in trucks. Infrastructure on site would include a processing plant, waste rock emplacement areas and a tailings storage facility, along with other infrastructure (refer to draft plan in **Figure 1**).

It is intended that silver/zinc concentrate produced would be transported by road in sealed containers to the Port of Newcastle (for export and smelting off-shore), while silver/lead concentrate would be transported by road in sealed containers to Port Pirie (for smelting) or the Port of Newcastle (for export and smelting off-shore).

The proposed Project would require a workforce of approximately 200 people during construction (18 month period) and around 150 in operations. Where possible, the workforce would be sourced locally from within the region.

One of the EIS studies to be completed is a Social Impact Assessment that will address key issues identified by relevant government agencies, neighbours and community members in relation to the proposed Project.

The technical studies to support the EIS are expected to be completed by September 2017, with lodgement of the EIS in the fourth quarter of 2017. The DPE will review the EIS and place it on public exhibition for comment and feedback from government agencies and the community (refer to **Figure 2**).

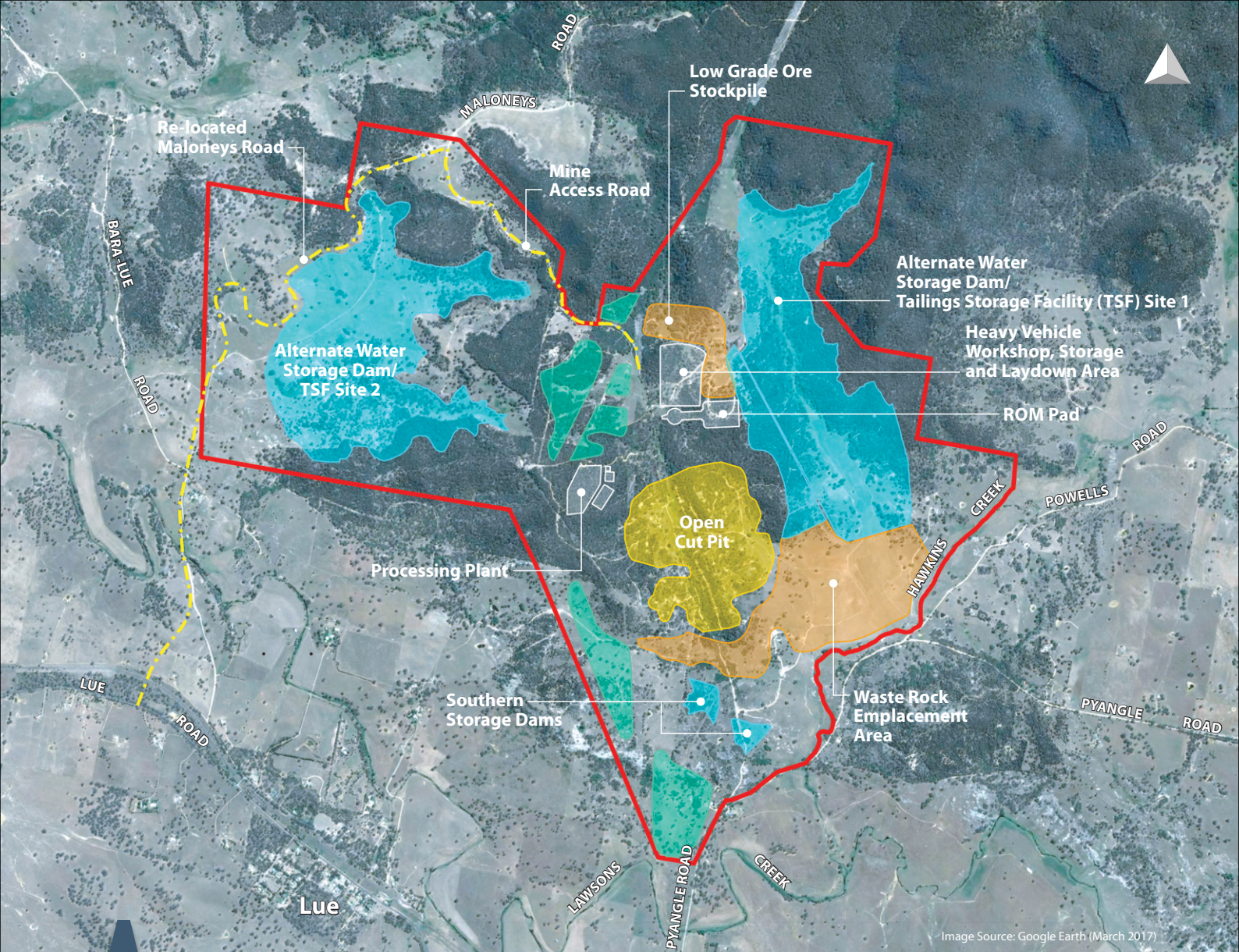


Figure 1 Bowdens Silver Draft Mine Site Layout (February 2017)

Legend

- Preliminary Mine Site Boundary
- Water Storage/TSF
- Stockpile
- Topsoil
- Open Cut Pit

How is this project different from previous projects?

Bowdens Silver understands the history and issues related to previous projects. Key differences between the Bowdens Silver Project and previous proposals include a much lower production rate, longer economically robust mine life, lower water requirements and no on-site workers' accommodation.

Bowdens Silver is committed to building and maintaining strong community relationships. We welcome your interest in the Project and encourage the community's involvement. Consultation will be transparent and Bowdens Silver will continue to maintain an open approach throughout the engagement process and through the life of the mine.



What planning and approvals will be required?

A development application will be prepared and submitted to the NSW Department of Planning and Environment (DPE). This application will be supported by a comprehensive Environmental Impact Statement (EIS). The full range of studies were listed in our February newsletter and include noise, air quality, health, blasting, water and ecology.

An outline of the indicative planning and approvals process is provided in **Figure 2**.

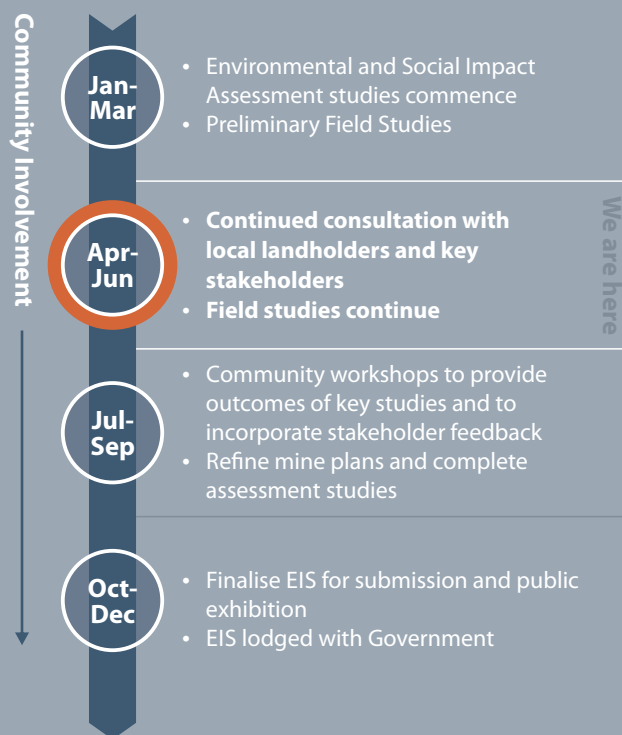


Figure 2 Approvals Process Timeline

Once the EIS is completed, it will be submitted to the NSW DPE. The EIS will then be placed on public exhibition, prior to assessment and determination.



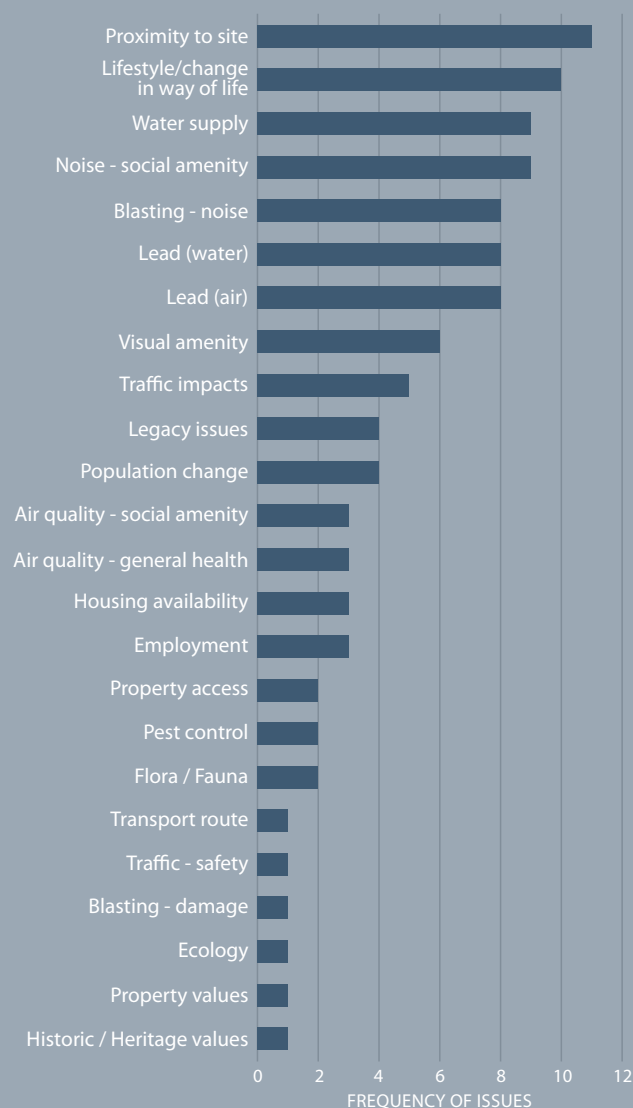
What is a Social Impact Assessment?

Umwelt (Australia) Pty Ltd (Umwelt), a specialised social impact consultancy will complete the Social Impact Assessment (SIA) and community involvement program as part of the EIS for the Project.

The SIA is about identifying, assessing and effectively managing the social impacts associated with a particular project. Through engagement with local landholders and key stakeholders, an understanding of the issues of importance and relevance to the community are identified and appropriate strategies are developed to mitigate and/or enhance social impacts.

To date, our Community Liaison Officer and Director have engaged with approximately 25 landholders and 20 key stakeholders, with the engagement program still continuing. We would like to thank the landholders and other stakeholders who have already made time to talk to us and discuss the Project.

The following chart summarises some of the concerns that we have heard raised by community members to date as part of our engagement program. This feedback has been very useful and will further define the studies – both environmental and social – to be undertaken as part of the Project assessment process.





Community Involvement

How can I be involved?

To date our engagement has focused on personal meetings with local landholders and key stakeholders. We will continue this engagement over the coming months to ensure that we fully understand the communities issues and concerns. As the assessment process continues we will have further information to share with you regarding our various technical studies.

A number of community information sessions are also planned to show you the results of our studies and update of our Project design and plan, the first being scheduled for 7th May 2017.

The community has told us how important Lue village is to them and their concerns for the future of the community if the Project proceeds. We are aware that Lue residents were involved in a consultative process in 2013 with Council, known as a 'Conversation with Lue'. We hope to further this dialogue through further discussions with residents regarding the future vision for the village.

Further Information

If you would like to be involved or have any questions about the Project, please contact:

**BOWDENS
SILVER**

Blake Hjorth
Community Liaison Officer

e. blakehjorth@bowdenssilver.com.au
t. (02) 6373 6420
m. 0417 991 567
a. 68 Maloneys Road Lue NSW 2850
w. www.bowdenssilver.com.au

**umwelt**

Narelle Wolfe
Principal Social Consultant

e. nwolfe@umwelt.com.au
t. (02) 4950 5322
m. 0409 786 585
w. www.umwelt.com.au

Come along to our upcoming Community Information Session and BBQ where we will:

- Provide further detail on the Project;
- Introduce Project team specialists working on the environmental and social assessment studies;
- Provide an overview of the assessment and DPE's approvals process; and
- Discuss community issues and concerns identified to date, through engagement with local landholders/residents.

Date: **Sunday 7th May 2017**

Time: **10am - 4pm**

Location: **Lue Community Hall**

We hope you can join us to learn more about the Project and have your say.

