

Bowdens Silver Project



BOWDENS
SILVER

Introduction

- Bowdens Silver is a local resource company 100% owned by Silver Mines Limited, an Australian public company listed on the Australian Securities Exchange.
- The Bowdens Silver Project is a proposal for an open-cut silver mine located near Lue, approximately 30km east of Mudgee in central NSW, that will deliver long-term jobs and investment to local communities around Lue, Rylstone, Kandos and Mudgee.
- The State Significant Development proposal is now in the latter stages of the planning approvals process, which requires approval under both NSW and Commonwealth planning and environmental legislation. A thorough and comprehensive range of assessments have been undertaken to ensure the potential impacts and benefits of the Project are understood and presented to Government and the community.
- Construction is planned to commence in 2024 – creating 320 direct construction jobs and 228 ongoing operational jobs, as well as extensive indirect jobs for local businesses and the community throughout the life of the Project.
- The mine will have a total project life of 23 years including construction and rehabilitation, with silver production lasting almost 17 years. By products of zinc and lead will also be produced.
- As part of ongoing exploration activities, a scoping study is underway for potential underground mining opportunities that could extend the life of the project and deliver even greater long-term benefits to the region.

Listening to the community

- Following community feedback on the Project's Environmental Impact Statement (EIS), we have worked closely with the NSW Department of Planning and Environment to refine the proposal and undertake further technical and environmental assessments.
- This has included the development of a new and optimised water management and supply strategy, and additional improvements to enhance the Project's economic and social contribution. The proposed mine will use proven, safe and independently-reviewed mining processes to maximise benefits and mitigate impacts.
- Bowdens Silver enjoys strong local support and we are committed to continuing to engage with the local community and stakeholders. Public submissions received on the EIS show almost 80% local support for the Project, which reflects a recognition of the important role Bowdens Silver can play in future-proofing employment and providing economic stability across the region.

Come talk to us

This brochure provides an overview of the Project, however we will continue to engage with the community and we encourage all community members to get in touch, provide feedback and learn more about the significant opportunities the Project will create. For further information about upcoming events and ways to engage, please refer to the Get in Touch section.

Project highlights



Employment opportunities

320 jobs during construction and 228 ongoing jobs during operations.



A locals-first approach

Ensuring local families can continue to live and work in their community by prioritising locals for jobs and offering quality training opportunities.



Flow-on benefits for local businesses

Opportunities for local businesses, contractors, suppliers and service providers to partner with Bowdens Silver.



Community infrastructure

\$4.7 million towards community infrastructure and road maintenance in partnership with Mid-Western Regional Council, plus other new road and bridge investments.



\$250 million capital investment

Delivering economic benefits for regional communities.



Community investment and sponsorship

Continuation of support for community initiatives and organisations through our Community Investment Program, which has already invested over \$500,000 into the local community. Further investment in local education and training is a priority.



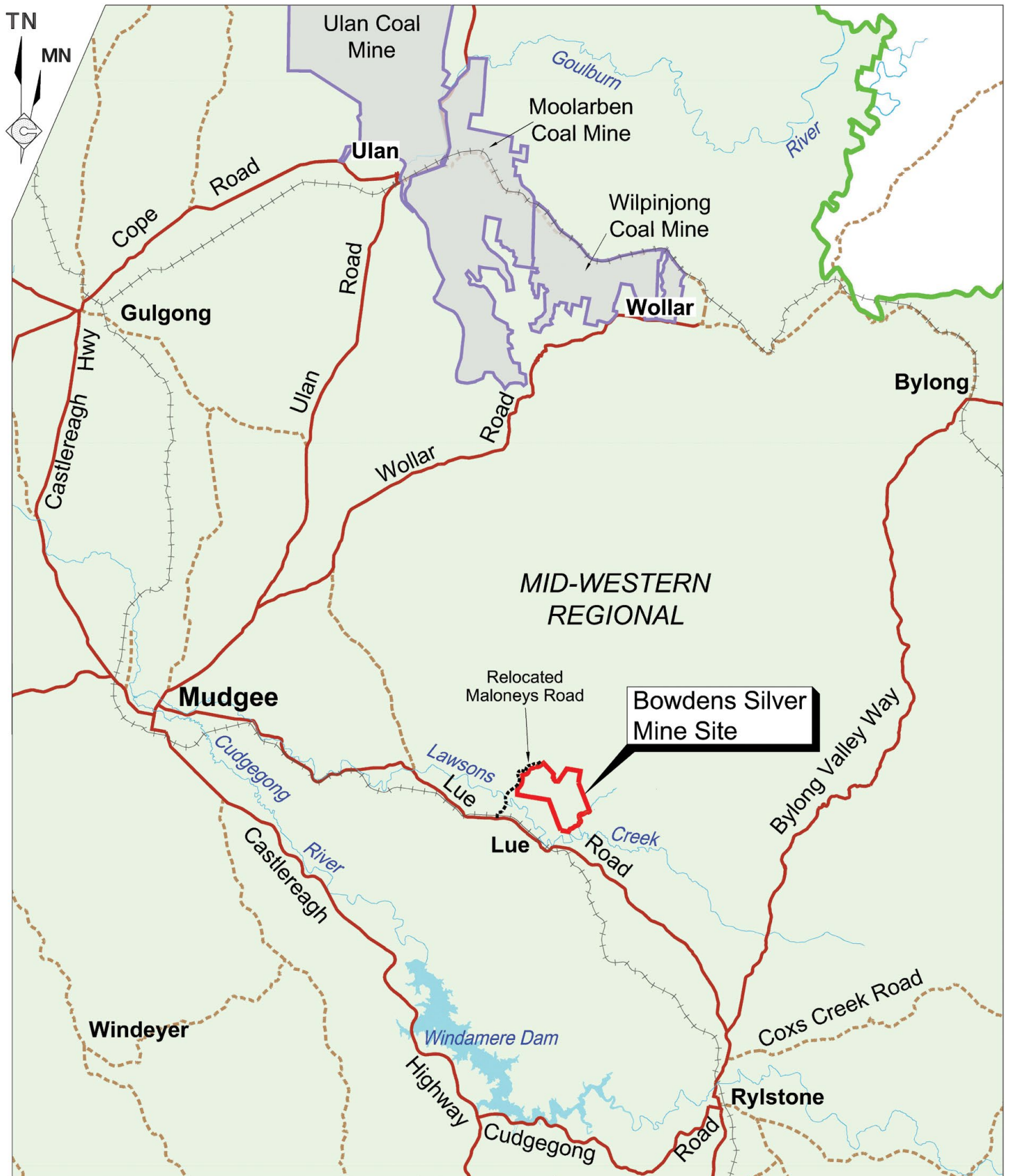
Safe and sustainable water use

The Project's water supply will be sustainably sourced on site and will not compete with local agriculture or affect environmental flows.



Supporting future technology

Silver and zinc have been recognised by the NSW Government as part of its Critical Minerals and High-Tech Metals Strategy as highly-valued metals with wide-ranging applications in fields such as electronics, solar power, aerospace, electric vehicles and medicine.



- REFERENCE**
- Mine Site Boundary
 - Relocated Maloneys Road
 - Mid-Western Regional LGA
 - Coal Mine Boundary
 - Existing Road - Major
 - Existing Road - Minor
 - Railway Line
 - Major Watercourse



Delivering jobs and investment to support the local community

The Bowdens Silver Project will deliver long-term economic and social benefits to the region.

- The Project will create 320 jobs during construction and 228 ongoing jobs for the local community.
- We have a locals-first approach to employment, with a commitment to prioritising local residents.
- We will work closely with our local communities to provide training and employment opportunities, ensuring locals and their families can continue to live and work in their community.
- The Project will future-proof employment in the region and provide an opportunity to diversify the local economy.
- A \$250 million capital investment will support the development, which will deliver flow-on benefits and opportunities for local businesses, contractors, suppliers and service providers to partner with Bowdens Silver.

A safe and sustainable water strategy

We have listened to community feedback and recently updated our approach to water on site. The previously proposed water supply pipeline has been removed and replaced with a new and optimised on-site water management and supply strategy.

- This means the Project's water supply will be sustainably sourced on site, through the use of dams, groundwater bores, water recycling and enhanced engineering techniques. The Project will be self-sufficient for water supply, even under drought conditions.
- The updated water strategy significantly reduces on-site processing water usage, saving an average of 390ML/year.
- We will not compete with local agriculture for access to water.

- We are committed to maintaining a positive relationship with our neighbouring agricultural industry and to maximising productivity on land retained for agricultural production.
- The removal of the water pipeline will result in less disturbance to land and biodiversity or heritage impacts.
- We will have no material impact on downstream creeks and streams or surrounding groundwater bores, and it will not draw directly from Lawsons Creek.
- The new strategy has involved close consultation with the Department of Planning and Environment and the community, as well as extensive technical assessments, modelling and independent peer reviews.
- The design and management of the Tailings Storage Facility meets the strict criteria set by the Environmental Protection Authority, with the new strategy reducing the potential for seepage.



“Our water use will have no material impact on surrounding water users.”



Prioritising Community Health

We have undertaken extensive risk assessments to consider the potential impacts of the Project on both community and environmental health, in accordance with State and Commonwealth regulatory requirements.

These assessments concluded the Project presents no health risks to the local community, including:

- The Project presents no unacceptable risks to water quality for drinking water and rainwater tanks, or nearby creeks, streams and groundwater bores.
- Strict mitigations and controls will be in place to ensure there will be no impacts to surface water and groundwater.
- The Project presents no health risks from air quality, dust or emissions from the mine.
- The Project presents no health risks from short-term or long-term exposure living in proximity to the mine.

Importantly, these outcomes have been peer-reviewed by NSW Government environmental agencies and will be regulated throughout the life of the Project by the Environmental Protection Authority (EPA) and other regulators.

Full details of the Health Assessments can be found in the [Project's Environmental Impact Statement](#).

Commitment to preserving the character of Lue

Protecting the ongoing viability of Lue is a priority for Bowdens Silver and we know it's important to our community. We take our environmental responsibilities seriously and will undertake all mining activities in an environmentally and socially responsible manner.

- Our viable farming operations and biodiversity conservation use of the land will continue alongside the development of the mine.
- We are committed to maintaining a positive relationship with the nearby agricultural industry and to maximising productivity on land retained for agricultural production.
- Regular monitoring will be conducted to demonstrate any changes to water quality, air quality, noise and visual impacts, and any other impacts are consistent with predictions.
- The removal of the water pipeline will result in less disturbance to land and biodiversity or heritage impacts.
- Progressive rehabilitation will be undertaken throughout the Project using natural landform design principles and revegetation techniques that are recognised as leading industry practice.
- We will consult with the community around potential land uses post mining. Potential opportunities include agriculture, native vegetation and pastoral grazing.

Community and stakeholder engagement

From the outset, we have been committed to engaging the community and stakeholders in a genuine, two-way discussion in order to understand concerns and issues that need to be addressed.

A range of activities were run to gather input from the community, including 1-on-1 interviews, door knocking, information sessions and Open Days, as well as meetings with a range of community members, local businesses, community organisations and Aboriginal groups.

As the Project progresses, Bowdens Silver will continue to engage with the community and key stakeholders.

For the latest information on upcoming community events and project updates, please visit our website at bowdenssilver.com.au.

Long-term support for the local community

We are committed to making a positive long-term contribution to the local community.

- We are proud to support local sporting organisations and community initiatives across Lue, Rylstone, Kandos, Mudgee, Gulgong and the surrounding areas, with considerable long term investments and partnerships established over the past six years.
- We recently signed a Voluntary Planning Agreement with Mid-Western Regional Council, which will involve contributions of more than \$4.7 million towards community infrastructure and road maintenance.
- We are also investing in a new public road, railway bridge overpass and creek crossing that will provide vehicle access to the mine site, west of Lue, significantly reducing traffic through Lue.
- We will continue to focus on education and training opportunities through our ongoing Community Investment Program.

Silver's role in supporting technologies of the future

Silver is a highly-valued metal with wide-ranging applications.

- Historically, silver was valued as a store of wealth and for its aesthetic appeal, with uses such as jewellery and tableware.
- Today, silver is a highly-valued industrial metal due to it being the best electrical conductor of all metals.
- The NSW Government's Critical Minerals and High-Tech Metals Strategy recognises the importance of the industry in providing the materials necessary for a low carbon future, while also driving economic growth for the state and helping to diversify its reliance on other industries.
- Some of silver's most exciting current and future uses include:



Extensive use in solar panels for the production of renewable electricity.



As a key element in the expanding electric vehicle industry.



Wide-ranging uses within the medical field, including bacteria control, water purification and COVID-19 testing kits.



Wide-ranging applications in high-tech fields such as computing, nano technologies, aviation and aerospace.

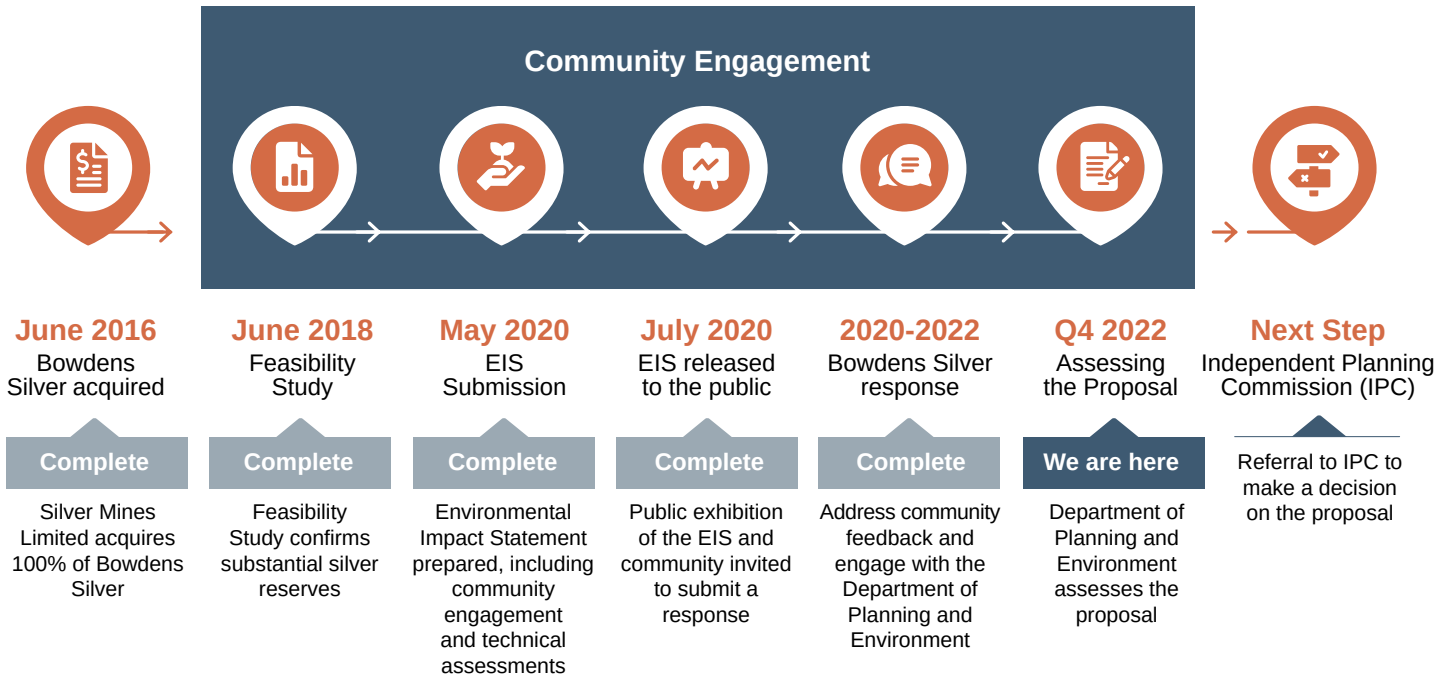


Critical componentry in everyday items such as mobile phones, TVs and other electrical appliances.



Where are we in the process?

We have been working closely with stakeholders, the community and the Department of Planning and Environment to ensure the Project meets strict assessment criteria and community expectations.



Opportunities for jobseekers and local businesses

Bowdens Silver is committed to leaving a legacy that outlives our Project and we will achieve this by providing economic opportunity, education and skills development.

- We are always on the lookout for talented locals to join our team.
- As we get closer to the construction and operation phase of the Project, Bowdens Silver will be advertising for a wide range of future roles.
- We will continue to work closely with the local community to identify training opportunities and re-skilling needs so that Bowdens Silver is accessible to workers across the region.



If you are keen to register your future interest in the Project, please contact careers@bowdenssilver.com.au with a copy of your CV.

The benefits of our presence go beyond workforce opportunities. We are committed to supporting local businesses and providing long-term stability for them to grow.

- As we get closer to development, Bowdens Silver will be hosting supplier briefings and meeting with local businesses across the region to ensure they're aware of opportunities to partner with us and reap the benefits of our presence.



If you or your business are interested in being a part of the Project in the future, please contact us at information@bowdenssilver.com.au.



Get in touch

Bowdens Silver's team of local staff live and work in the community, and always welcome your questions or feedback.

Our website also contains a handy FAQs section answering a wide range of questions we've received from community members and interested stakeholders.

For further information and to find out more about upcoming community engagement activities, please visit the website or contact us.

Blake Hjorth – Community Liaison Officer



bowdenssilver.com.au



information@bowdenssilver.com.au



+61 (02) 6373 6420

After Hours:

+61 (02) 8960 6111

