

Community Consultative Committee Meeting Minutes

**Bowdens Silver Pty Limited
("Bowdens")****Exploration Community Consultative
Committee (CCC)****Meeting Minutes** Tuesday 7 March 2017**Independent Chairperson:** Margaret MacDonald-Hill**Minute Taker:** Sally Mayberry**Next Meeting:** Tuesday May 9, 4pm

Meeting Commenced: 5:04pm

Meeting Ended: 8:34pm

Attendees:

Margaret MacDonald-Hill (*Chairperson*)
Jaime Flynn (*Dept. Industry- DRE*)
Sonia Christie
Tom Combes
John Lydiard
Mick Boller (*LAG Representative*)
Anthony McClure (*Managing Director Silver
Mines Limited, Bowdens Silver P/L*)
Sally Mayberry (*Bowdens Silver P/L*)
Jane Munro (*Bowdens Silver P/L*)
Keith Perrett (*Chairman Silver Mines Limited*)
Julie Robertson (*MWRC*)
Tony Sheridan
John O'Neil (*MWRC Representative*)

Community Consultative Committee Meeting Minutes

Agenda Topic	Discussion
Welcome	The Chair declared the meeting open and welcomed members to the meeting.
Apologies	Brett Maker Nick Butler (<i>DRE</i>) Department of Planning and Environment (DPE) representative
Declaration of Interest	Margaret MacDonald-Hill (MMH) declared paid position as the independent Chair; also chairs a number of CCC's and is a Member of the Mine Subsidence Board Declaration of Interest and Code of Conduct forms distributed to the CCC, to be completed and signed by all members. Any changes to committee member Interests should be disclosed to the Chair prior to the next meeting.
Confirmation of previous minutes	<p>Discussion on minutes for 30 minutes. Confirmation of previous meeting's minutes deferred.</p> <p>LAG representative M Boller asked that Bowdens express the Bowdens deposit lead concentration in a different unit of measurement from that previously provided in the meeting minutes. MB believes his calculation of a ratio of 50:1 lead/silver was deliberately omitted. Member stated that the draft meeting Minutes published on the Bowdens Silver website lack detail. Queried how the community can pose questions and receive answers if there are insufficient details in the minutes?</p> <p>MMH explained that the minutes are not a transcript and presentations are included providing additional detail.</p> <p>Comment from MB and TC that the Minutes were lacking detail. Request for an independent Minute taker to be appointed.</p> <p>Question regarding Guidelines followed for CCC meetings. MMH stated that the November 2016 DP&E Guidelines will be followed (clarification in Business Arising).</p> <p>Action item: The Minutes of the meeting will be distributed within 7 days of the meeting. CCC members have 7 days to respond back to the Chair, who has final say prior to posting on company website.</p>
Business arising	<p>DP&E Community Consultative Committee Guidelines are for State Significant Developments. This CCC will generally follow where applicable, but is not constituted as a project with consent, it is an exploration committee under DRE.</p> <p>J Flynn stated DRE is responsible for exploration titles and assessment. Bowdens Silver is accountable to the DRE rather than the DP&E, at this stage of the project.</p> <p>Question: Is there a guideline for exploration under the DRE that apply to this CCC, instead of the DP&E Guidelines?</p> <p>Answer: Bowdens Silver is an exploration company. The Bowdens Silver project is moving towards mining approval process, after which DP&E Guidelines will apply if the project receives DP&E approval.</p>

Community Consultative Committee Meeting Minutes

	<p>MMH confirmed that the Guidelines currently used are appropriate. DP&E have been invited to each meeting and will attend a future meeting.</p> <p>Current mine plans (Environmental Impact Statement (EIS) and Feasibility Study) are being worked upon for Bowdens Silver and are scheduled for completion in the second half 2017. Concurrently, exploration continues on exploration licences on and surrounding EL 5920.</p> <p>Request for J Bentivoglio to attend the CCC as silent observer. The CCC meetings are not public meetings. Community representatives are appointed to the CCC to represent the views of the wider community.</p>
Correspondence	<ul style="list-style-type: none"> • 17/11/16 - email DP&E CCC Guidelines to CCC • 6/12/16 - email response from Bowdens Silver to CCC on employment and draft infrastructure plan • 20/1/17 - email DP&E information session to CCC • 07/02/2017 - M Boller email to A McClure • Mr M Boller tabled a letter (Re: Portion 149 Crown Lease) from Mrs Maureen Boller (see attachment 1)
Reports	<p>DRE role</p> <p>J Flynn and N Butler represent DRE - Community Engagement (resource and energy projects). Their role involves providing support to stakeholders through information sharing, receiving feedback from the community and stakeholders including local government, CCC's, impacted landholders and developers. J Flynn distributed a resource document that includes links to government websites that provide useful information relating to processes and projects and offered to meet with any impacted landholders one on one on 08/03/17.</p> <p>Project update - A McClure and J Munro</p> <p>Presentation attached (attachment 2) to meeting Minutes. Questions captured in Table 1.</p> <p>TC, JL, MB question accuracy of information presented; smaller mine footprint, disputed basis of reporting of silver, lead and zinc, incorrect property information for Lue Village, including noise monitoring. TC expressed concern for Lawson Creek residents on volume of water (2160meg pa) to be captured on site for mine use and proximity of processing plant. Lue community is concerned about the amount of lead mined to produce silver.</p> <p>Discussion on the use of 'preliminary' in presentation. SC suggests replace with 'proposed', states need for Bowdens Silver to hold a community meeting in Lue as soon as possible to address community concern. Supported by other members. AM stated that a Lue meeting is being planned in follow up to the last meeting held at the Bowdens Silver site. Asked whether Bowdens Silver would provide funds for a peer review by an expert chosen by community. AM stated that the Government' review and peer review is a very detailed review process conducted for and on behalf of the public. KP said this request would have to be put to a Board meeting.</p> <p>Discussion on financial viability of project.</p>

Community Consultative Committee Meeting Minutes

General Business

- Questions regarding rights of landholders and systems that support the rights of the landowners
- M Boller: Showed a document regarding properties surrounding Bowdens Silver project.

M Boller requested that Bowdens Silver provide information to landowners regarding the distance of their properties from specified parts of the proposed mine infrastructure, as soon as possible. MMH stated that M Boller's document could not be included with the minutes as it breached privacy of individuals listed. It was also noted that this information referred to was based on outdated previous owner's documentation.

Bowdens Silver is currently presenting and discussing preliminary plans with neighbours and will be expanding its activities to present plans for community information and feedback as part of the EIS process.

- T Sheridan: Comment regarding certain opposition to Bowdens Silver proposals which is not representative of general community opinions. The current CCC should be mindful to be balanced and reflective of the community. Many community members are supportive of the project to go ahead. There should be more consideration within the CCC for the overall benefits of the project.
- CCC members stated they had questions from the community that were not asked during the meeting (due to time constraints) that will be tabled at a later date.
- CCC member asked: could the Bowdens Silver presentation be submitted to the CCC members before the meeting so they have time to read it, and save time in the meeting. A McClure stated this is not appropriate as the PowerPoint presentation requires presenting. MMH acknowledged some presentations do require explanations but this request will be considered.
- Next meeting: 4pm 09/05/2017 at Mid-Western Regional Council Chambers

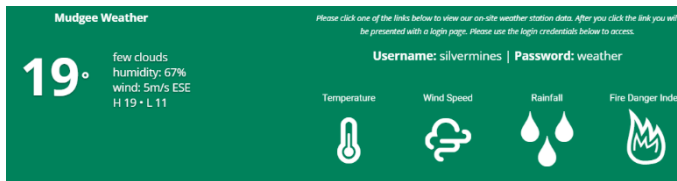
Table 1: Questions and comments arising during the meeting and additional clarification

Question	Answer and Comments
Discussion regarding preliminary maps that have been released with mining infrastructure placed on land that has no landholder agreement in place	<p>Each landholder has been approached by the Company to discuss these preliminary plans. Most landholders have elected to discuss.</p> <p>Action item: J Flynn to provide land access information</p> <p><i>Post Script: The link below provides information on landholder rights with relation to exploration activities</i> http://www.resourcesandenergy.nsw.gov.au/landholders-and-community/landholders-rights</p>

Community Consultative Committee Meeting Minutes

Question	Answer and Comments
How are landowners contacted in regards to 'lines being drawn on paper' and the infrastructure located on privately owned land	Active process of personal engagement, offers of meetings, open door policy.
How long does DP&E have the EIS prior to submitting it to public?	Action Item: DP&E to respond MMH noted a DP&E representative will attend a future meeting
Can the silver, zinc and lead be reported in the same way	Bowdens Silver presents metal concentrations according to normal industry, government and academic standards, i.e. grams per tonne for precious metals and percentages for base metals.
Is water to be sourced from Dunns Swamp?	Bowdens Silver are considering all options, with the primary option of surface water capture on the Bowdens Silver site with extraction from dam operations, mine water extraction and on-site recycling. The preliminary requirements are 5-6 ML/day. Other options including licencing and sourcing from areas external to the project such as excess water from coal mines. As the Bowdens Silver mine gets deeper, the operation will be closer to being self-sufficient for water. <i>Post script: the Company will not be sourcing water from Dunns Swamp</i>
Have studies been done on the impact of the Lawson Creek catchment? Concern over the extraction of water and the impact on Lawson Creek.	Water assessment is being done by Jacobs and must incorporate the entire catchment, impacts and systems. Specialists will present their work and their findings, to Bowdens Silver and the community. This will provide an opportunity to critically analyse the water science.
Groundwater results – can they be put up on Bowdens Silver website	Yes, it is being worked on.
How many ML will the dams hold	Action item: Bowdens Silver to respond
What are the two small dams at the top of the water capture dam for?	Action item: Bowdens Silver to respond
Noise monitoring- the preliminary map in the presentation shows monitors that aren't actually there, on several locations.	Clarification of noise monitor location map shown in Bowdens Silver presentation – these are proposed monitoring locations. Action item: Bowdens Silver to respond to noise monitoring locations, and assessment.
The Silver Mines Limited website states the Feasibility Study is being fast-tracked- seems to be inconsistent with Bowdens Silver statements to the community that states that mine details are not yet finalised.	Proposed mine details remain in preliminary form and are yet to be finalised. As provided in detail in the CCC presentation, the Feasibility Study and EIS are scheduled for completion in second half 2017.

Community Consultative Committee Meeting Minutes

Question	Answer and Comments
Several of the CCC Members organised a community meeting in Lue. Approx. 18 people attended, none of whom had spoken directly to Bowdens Silver. A community meeting by Bowdens Silver in the Lue Hall was suggested.	Bowdens Silver have been planning its next public meeting to be held in Lue. A date is yet to be proposed but will be done so shortly. The previous Open Day was held at the Bowdens Silver office site in 20/11/2016 and all of the Lue residents and surrounds were invited.
Many Lue residents don't have computer access – hence website notifications will not reach them.	In addition to online and newspaper notifications, several post office mail outs have also been conducted to all Lue residents on the Bowdens Silver register. Also, Open Day invitations were sent to all Lue residents as a “global” mailout undertaken by Australia Post. If CCC Members are aware of any residents who aren't hearing from Bowdens Silver, let the Company know as soon as possible so contact can be arranged.
Are expected tax payments incorporated in economic assessment?	This information will not be included in the EIS as it covers economic assessment in a more general sense. The feasibility work covers more detailed economics.
Are employees occupying Bowdens residences? A resident has reported to a CCC member that he was denied employment at Bowdens because he was renting Bowdens Silver property.	The Company wishes to avoid conflicts of interest relating to employees occupying housing on-site. Apart from two current occupancies dating from before the current ownership, one house is currently being occupied by a senior staff member and family while they search for permanent housing. Some housing is planned to be renovated for general lease.
Publication of meteorological data – where can it be accessed?	<p>www.bowdenssilver.com.au opening page. Scroll down to find links to the weather stations. The icons seen in the image below have links to the external website with weather station data. The links will be incorporated into the Environment>Monitoring page over the coming weeks.</p>  <p>The screenshot shows a green-themed weather website for Mudgee. It displays a temperature of 19°C, weather conditions (few clouds, humidity: 67%, wind: 5m/s ESE, H 19 - L 11), and a login section with the username 'silvermines' and password 'weather'. Below the login section are four icons representing Temperature, Wind Speed, Rainfall, and Fire Danger Index.</p>
Is it known where the offsets will be for the Endangered Ecological Community (EEC) (referring to the 'white box, yellow box, blakelys redgum woodland and derived native grassland')	Not yet known, but offsets will be required. All options regarding offsets will be considered, including purchase of land or leases.
Some general questions on regulation of mining activities:	<p>J Flynn referred to Environmental Protection Agency (EPA) as the lead agency and also mentioned information on DRE Resource Regulator can be found on DRE website.</p> <p><i>Post Script:</i> http://www.resourcesandenergy.nsw.gov.au/regulation</p>

Community Consultative Committee Meeting Minutes

Question	Answer and Comments
Will Bowdens Silver be financially able to conduct this project? How does the company expect to afford the mine?	Bowdens Silver through its parent Company Silver Mines Limited is currently well financed and is strongly supported by quality and substantial institutional shareholders. Also the Company's board and management have considerable experience in mine development including the acquisition of Project Finance for development.
Is the REF publicly available?	Yes it is available online <i>Post Script: The REF can now be viewed on Bowdens Silver website: http://bowdenssilver.com.au/wp-content/uploads/2017/03/Review-of-Environmental-Factors-Bowdens-Stage-2.pdf</i>
Will Bowdens Silver request a 120 day review period of the EIS for the community?	This is a decision of the DP&E not the Company. However, a longer period should be able to be considered.
Would funds be available (\$50,000) to have independent studies to be conducted on the EIS?	Peer review processes are built into the EIS assessments.
Contact details on the website.	Action Item: CCC members to advise MMH if their contact details can be placed on the Bowdens Silver website.
Will Bowdens be adopting the draft Social Impact Assessment from DP&E?	Yes

Attachment 1

To The Chairman and members of Bowdens CCC:

I was shocked and outraged to discover through the Bowdens Community Consultative Committee that Silver Mines Ltd has plans to place infrastructure on our land. The company continuing to state that plans to take our land are just plans to take our land is an inadequate response to this injustice. Recent offers of informal chats about the matter are insulting and in any case I refuse to participate in any "discussion" that has as its starting point that someone else can take land over which we have rights and for which we have approved plans. SVL must withdraw its plans.

The Company must also remove false and misleading information from its website as promised. The company continues to claim that significant baseline studies of our underground water have been or are being conducted when that is not the case.

Thank you for providing this opportunity to defend my land and home.

Maureen Boller (10/2/2016) *M. Boller*

Powells Road

Pyangle.

Community Consultative Committee Meeting Minutes

Attachment 2

Bowdens Silver CCC 14 February 2017 PowerPoint Presentation

A faint, stylized topographic map of Bowdens Silver is visible in the background at the top of the slide. It features contour lines and two shaded areas representing hills or mountains.

BOWDENS **SILVER**

Community Consultative Committee

7th March 2017

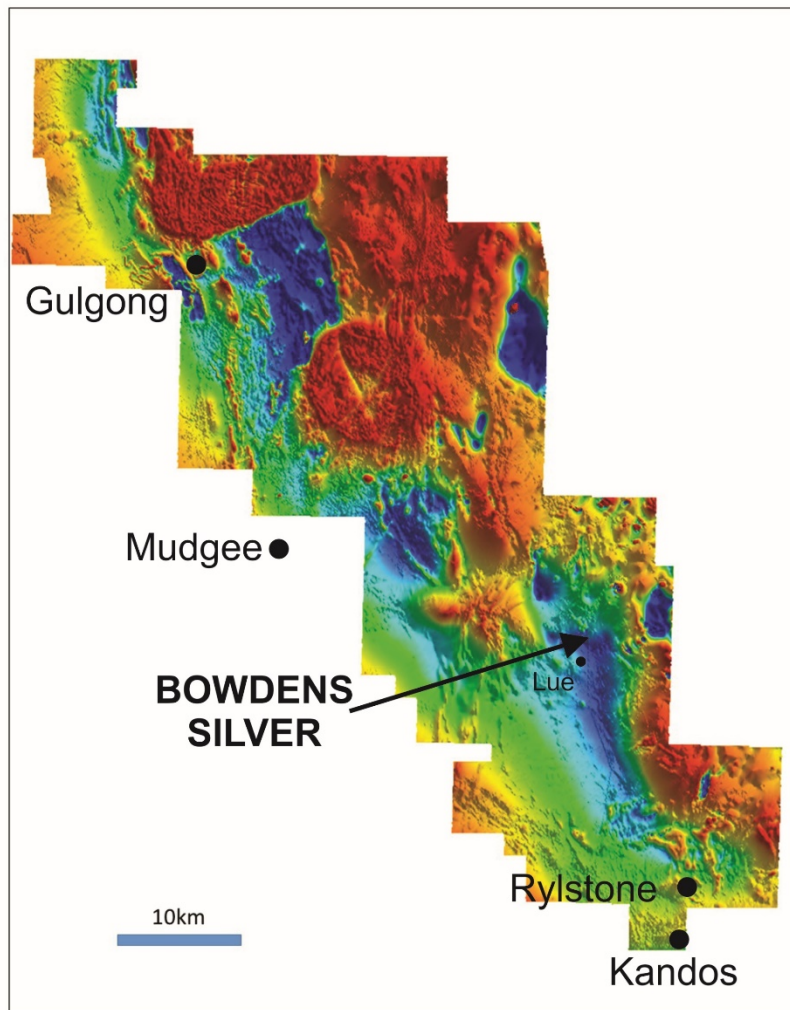


CONTENTS

- Exploration
- Environmental Impact Statement
- Feasibility Study
- Secretary's Environmental Assessment Requirements (SEAR's)
- Community
- Farm
- Education
- Policy Development
- Regulatory
- Director's Responsibilities

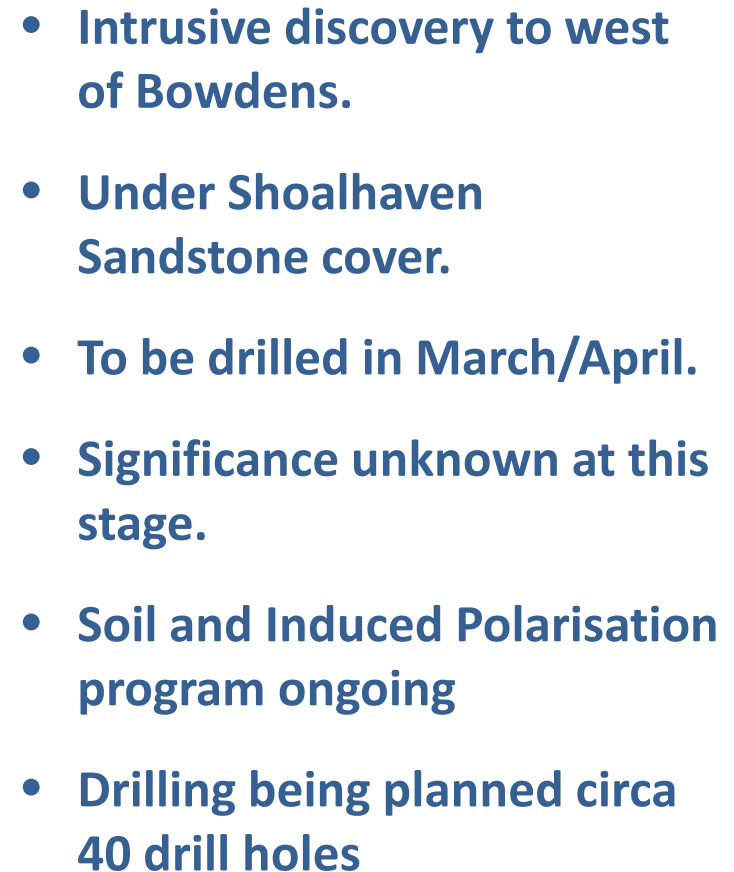
BOWDENS SILVER PROJECT

CURRENT EXPLORATION ACTIVITIES



- Airborne geophysical program completed covering all licence areas.
- Interpretation is ongoing.

CURRENT EXPLORATION ACTIVITIES



BOWDENS SILVER PROJECT

CURRENT EXPLORATION ACTIVITIES

Hole ID	From (metres)	Interval (metres)	Silver (g/t)	Zinc (%)	Lead (%)	Silver Equiv. (g/t)
BD16001	90.3	95.7	109	0.27	0.40	126
including	90.3	8.7	540	0.34	0.73	568
BD16002	118	124	85	0.19	0.20	95
including	136	20	200	0.26	0.39	217
	223	17	229	0.01	0.26	236
BD16005	249.3	24.7	184	0.03	0.09	188
including	270	4.0	924	0.05	0.30	936

g/t = grams per tonne.

Drill hole intersections using a minimum 30g/t silver cut-off over 5 metre width and up to 10 metres internal dilution factor with higher- grade zones using a minimum 60g/t silver cut-off over 5 metre interval and up to 5 metres internal dilution.

Bowdens silver equivalent calculated using metal prices of US\$20 per ounce silver, US\$1.00 per pound zinc and, US\$1.00 per pound lead and recoveries of 81% for silver, 82% for zinc and 81% for lead.

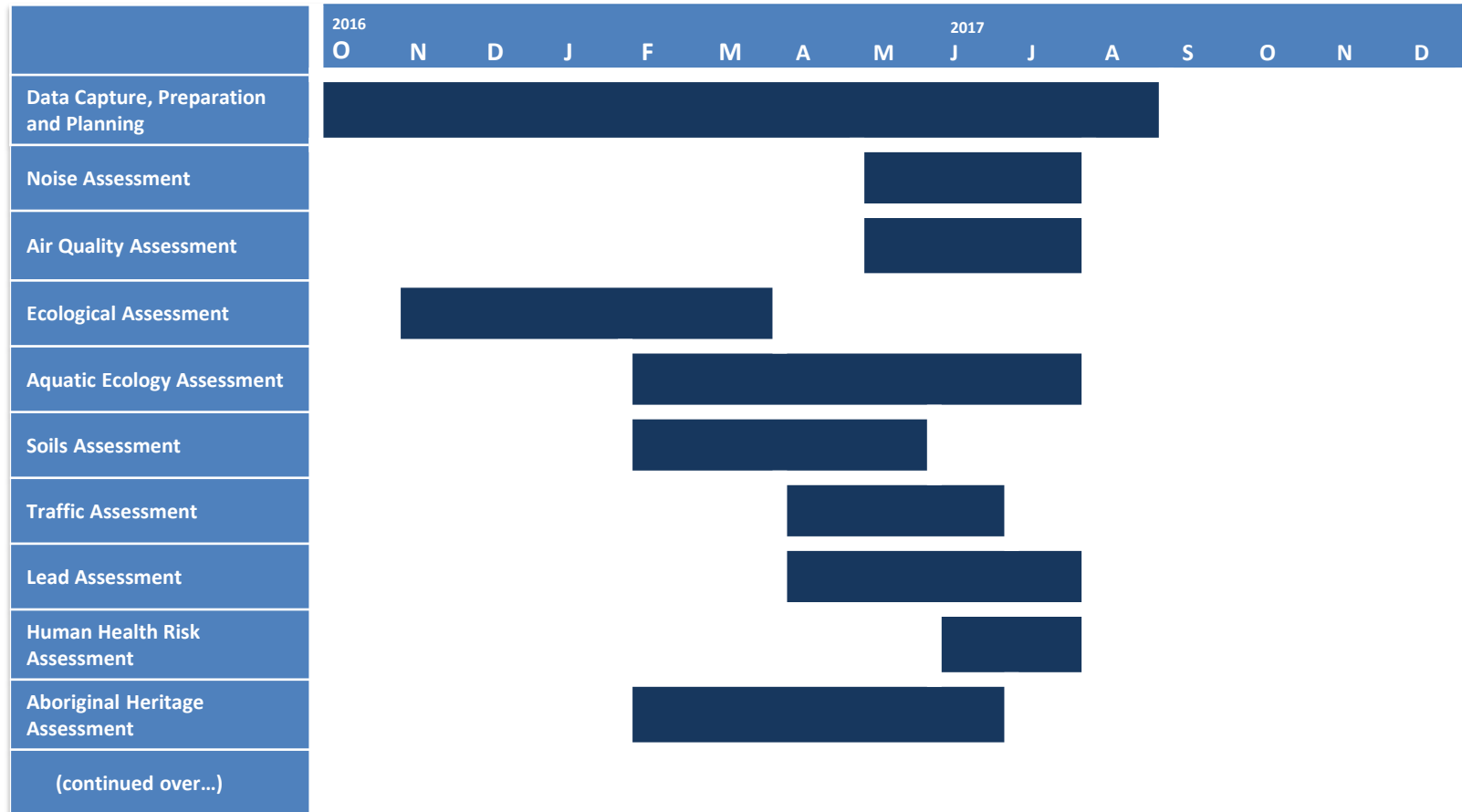
- Drilling within the current resource areas and at depth.
- Primary purpose is to improve confidence of resources and extensions at depth.
- 29 drill holes completed for 8,100 metres (average 280 metres)
- 21,000 metres to go in current program

CURRENT ACTIVITIES

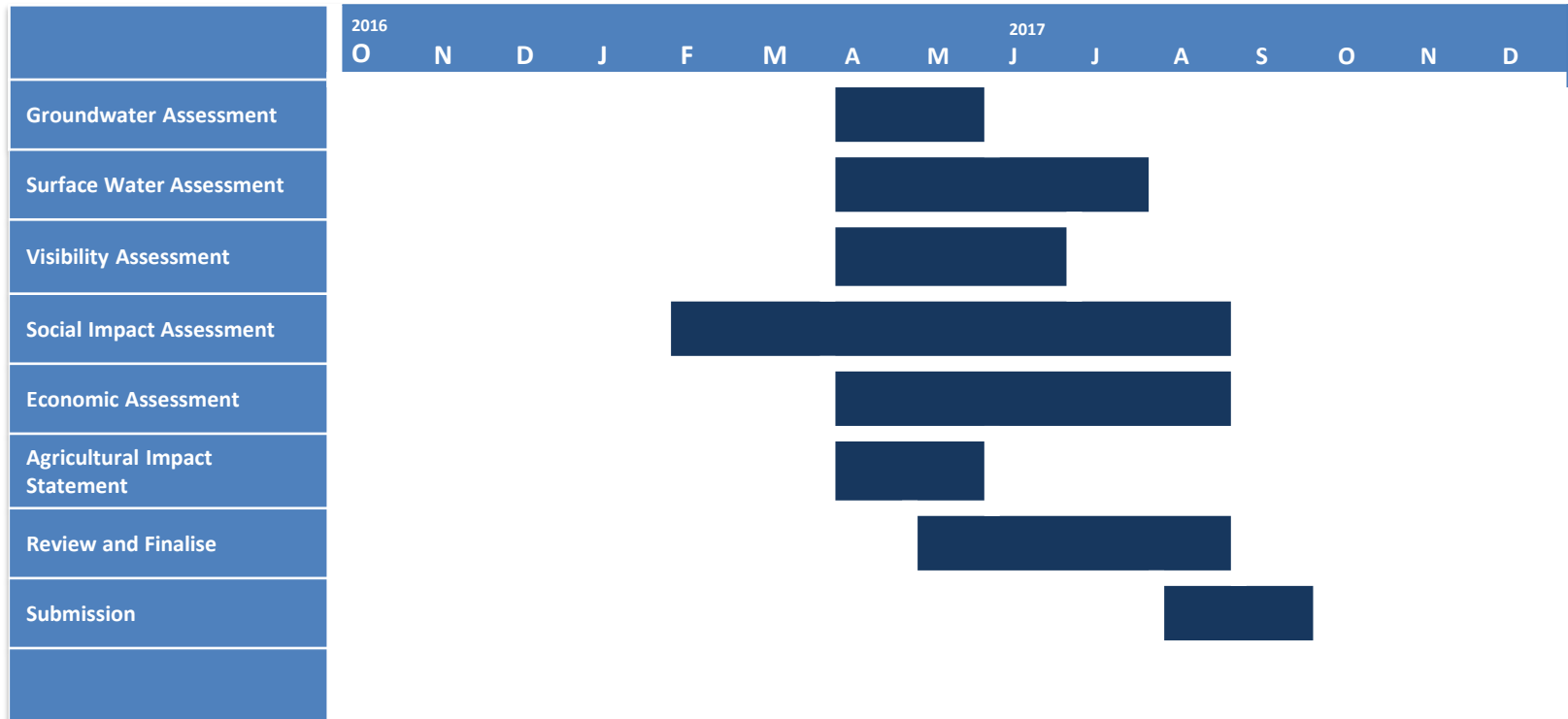
ENVIRONMENTAL IMPACT STATEMENT COMPONENTS

Area of Study	Primary Consultant
Management	RW Corkery & Co.
Noise, Vibration & Blasting	SLR Consulting
Visibility	Richard Lamb & Assoc.
Air Quality	Ramboll Environ
Terrestrial Ecology	EnviroKey
Aquatic Ecology	Cardno
Soils and Land Capability	McKenzie Soil Management
Site Access	Barnson
Transport	The Transport Planning Partnership
Health Risk and Lead Management	EnRiskS
Aboriginal and Cultural Heritage	Landskape
Surface Water	ATC Williams
Groundwater	Jacobs
Social Impact	Umwelt
Agriculture Impact	TBA
Economic Impact	TBA

EIS TIMELINE (subject to change)



EIS TIMELINE...continued (subject to change)

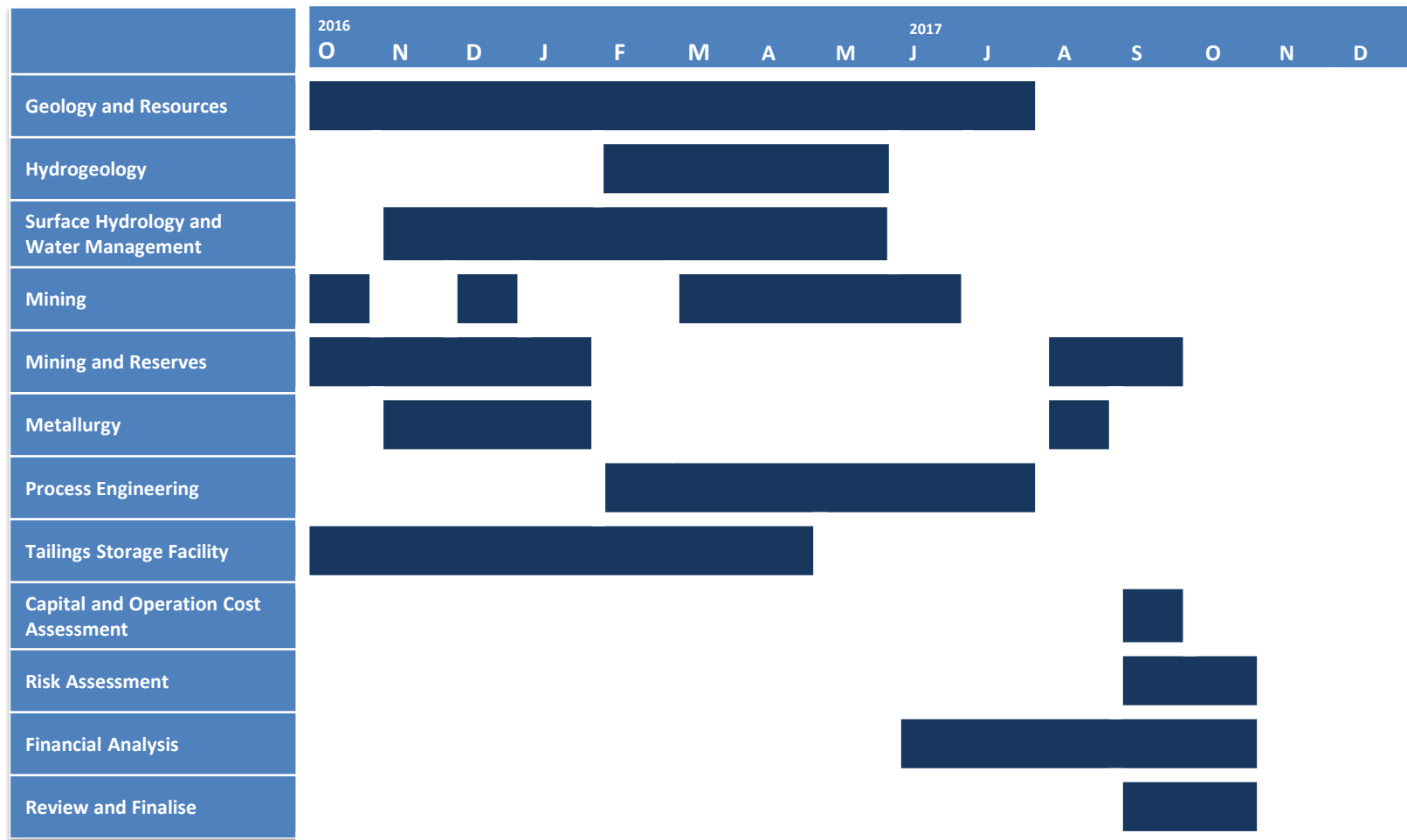


CURRENT ACTIVITIES

FEASIBILITY STUDY COMPONENTS IN PROCESS

Area of Study	Primary Consultant
Geology, resource and mine planning, process design	AMC Consultants
Metallurgy	Graeme Campbell & Assoc
Tailings and water resources	ATC Williams
Groundwater	Jacobs
Resource/Reserves	AMC and TBA
Engineering	TBA
Financial Analysis & Market Economics	TBA

FEASIBILITY STUDY TIMELINE (subject to change)



BOWDENS SILVER PROJECT

PRELIMINARY ENVIRONMENTAL ASSESSMENT

- Preliminary guidelines for Secretary's Environmental Assessment Requirements (SEAR's).
- Smaller, lower impact development planned circa 2.0 million tonnes per annum ore.
- Based on 34 million tonnes of ore and strip ratio of 1.7:1 (resources and reserves yet to be defined, waste could be lower).
- Potential water capture onsite.
- Site access from west of Lue.
- 500kV power lines to re-align.
- Mine life minimum 17 years.
- Personnel circa 200 during construction and 150 during operations.
- Development capital investment circa \$150 million.
- Production of silver/lead concentrate and zinc concentrate for sale and treatment off-site.
- Key components assessments continue as part of the Feasibility Study and Environmental Impact Statement.

BOWDENS SILVER PROJECT

PRELIMINARY SITE LAYOUT

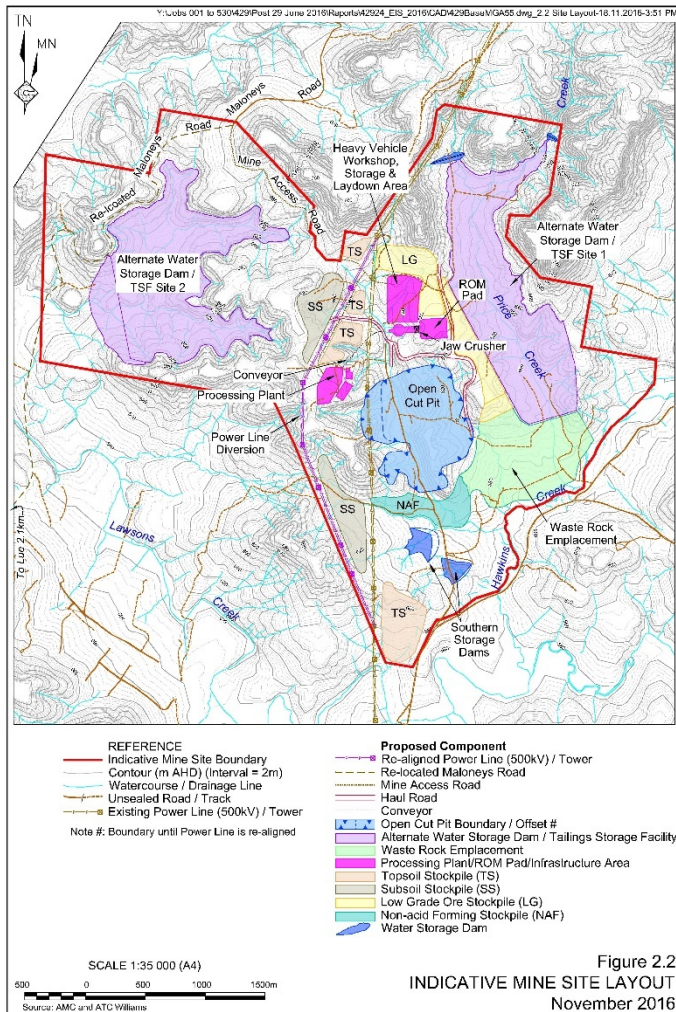


Figure 2.2
INDICATIVE MINE SITE LAYOUT
November 2016

- Indicative Site Layout.
- Indicative Mine Site Boundary.
- Two options for tailings and water storage.
- Subject to change as EIS and Feasibility Study develops.

BOWDENS SILVER PROJECT

PRELIMINARY SITE LAYOUT & HOUSING

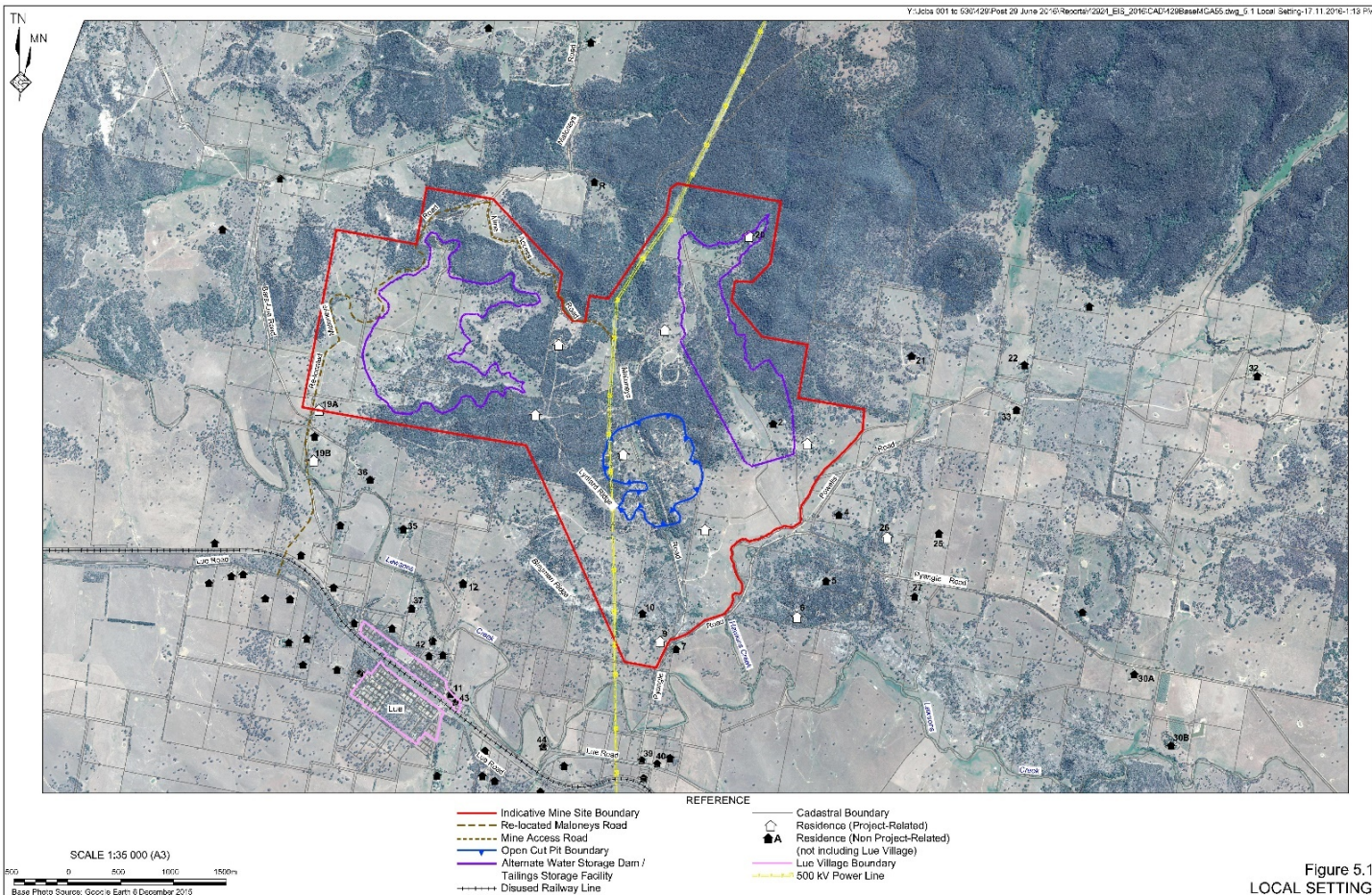
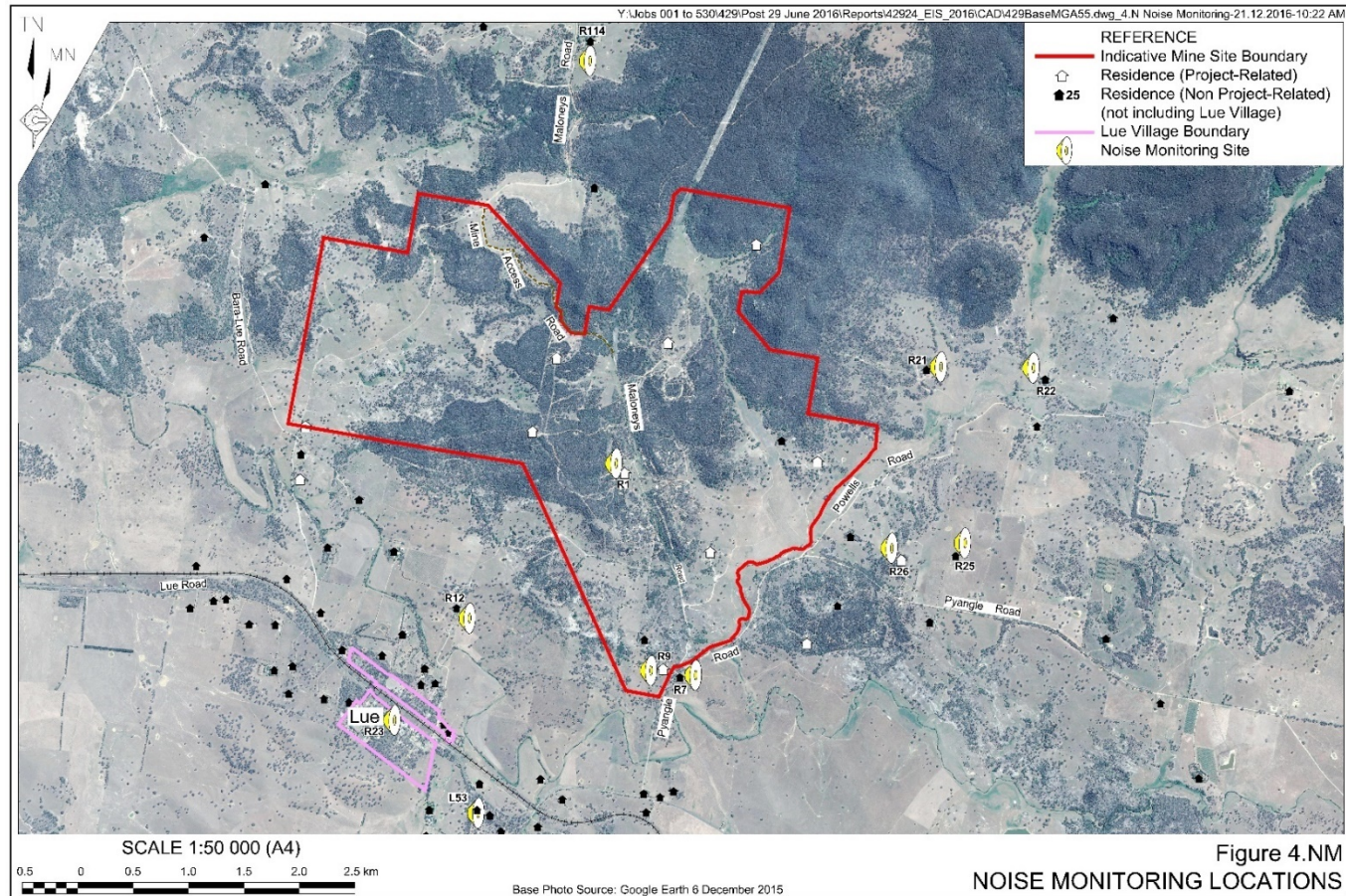


Figure 5.1
LOCAL SETTING

BOWDENS
SILVER

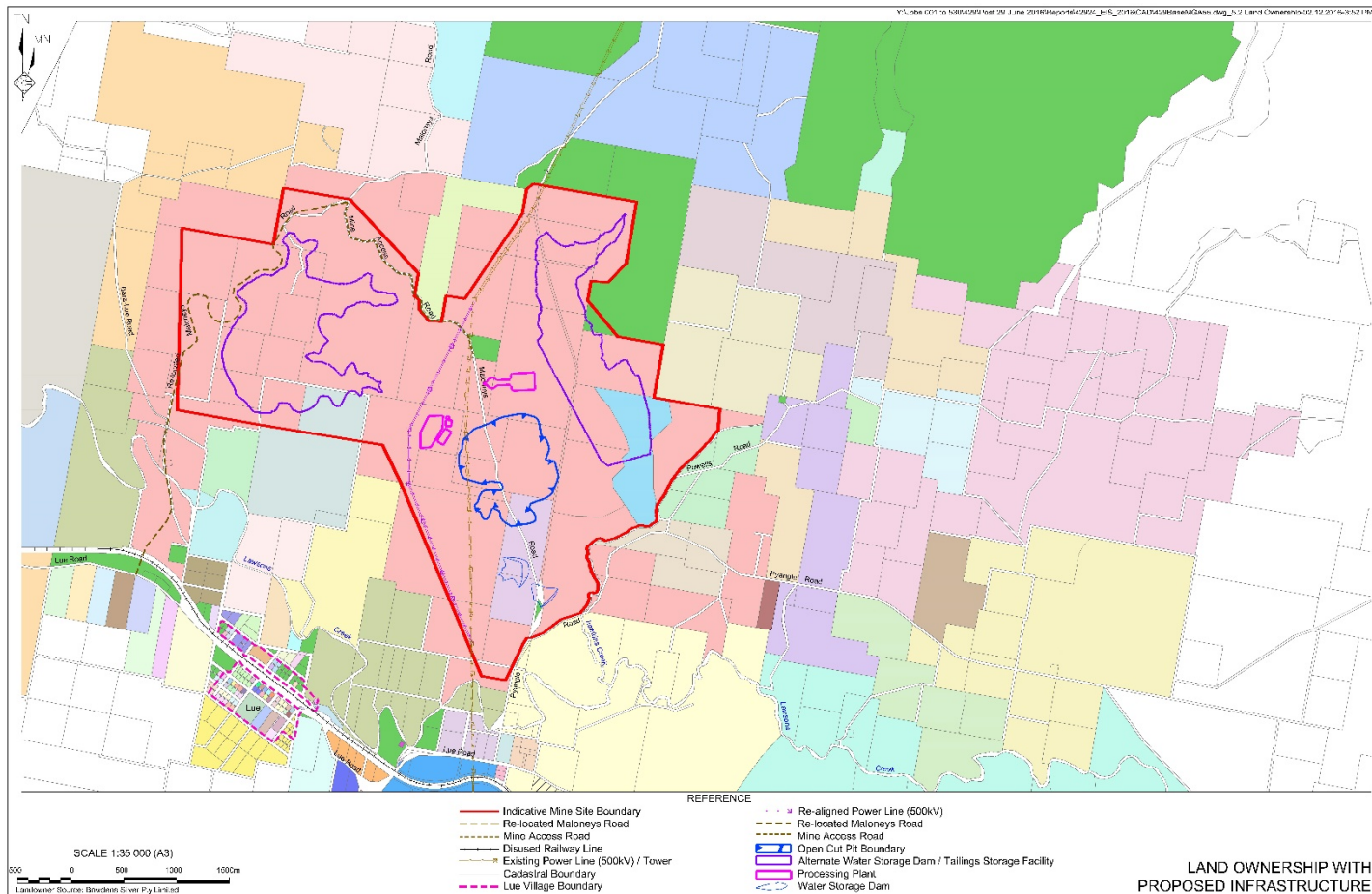
BOWDENS SILVER PROJECT

PRELIMINARY SITE LAYOUT AND NOISE MONITORING



BOWDENS SILVER PROJECT

PRELIMINARY SITE LAYOUT AND LAND OWNERSHIP



BOWDENS SILVER PROJECT

PRELIMINARY SITE LAYOUT AND VEGETATION

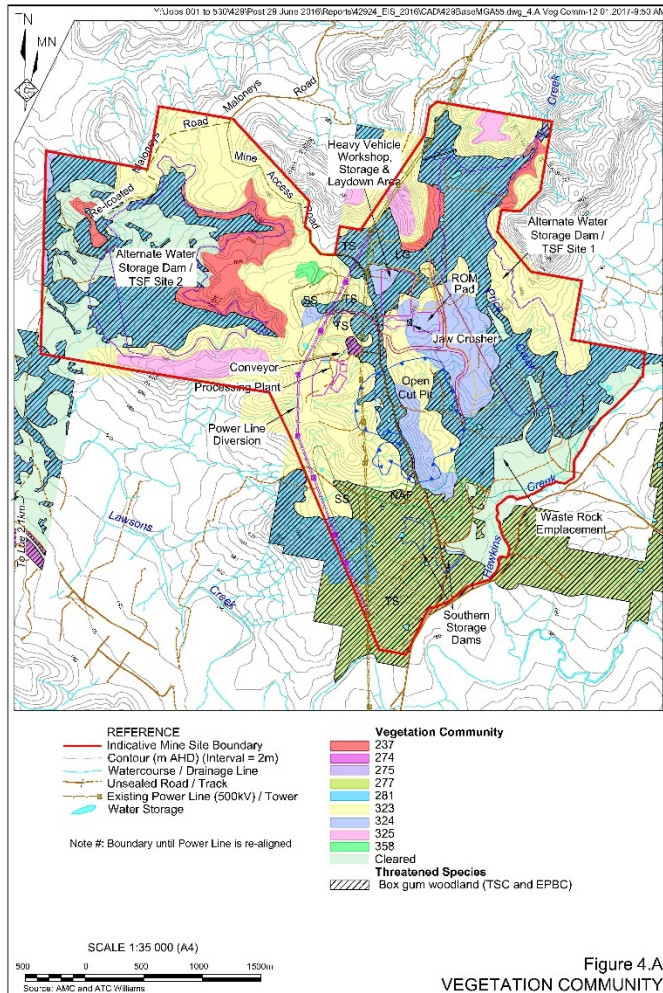


Figure 4.A
VEGETATION COMMUNITY

BOWDENS SILVER PROJECT

SECRETARY'S ENVIRONMENTAL ASSESSMENT REQUIREMENTS

The latest SEAR's were issued in late December 2016 and will be current for two years. Specific issues that Bowdens Silver must address include:

LAND

Assess the likely impacts on soils, agricultural and landform impacts including long term geotechnical stability of any new landforms on site.

AIR QUALITY

Likely impacts of the development on air quality in line with the NSW Environmental Protection Agency (EPA) requirements and any greenhouse gas considerations.

HUMAN HEALTH

A human health risk assessment addressing how the development's environmental impacts in relation to air quality (including heavy metals) and noise may impact on the local community as well as monitoring and management measures to reduce any risk to human health.

WATER

Assess likely impacts on quantity and quality of the region's surface and groundwater resources. Any impacts on aquifers, watercourses, water-related infrastructure and other water users.

NOISE & BLASTING

Likely operational noise including construction and road impacts.
Assess any blasting impacts from development.

ALSO REFER TO 14TH NOVEMBER 2016 CCC MEETING PRESENTATION WITH FURTHER DETAILS ON SEAR's, ENVIRONMENTAL IMPACT STATEMENT, COMPLIANCE AND "ITEMS WE WILL ADDRESS".

**BOWDENS
SILVER**

BOWDENS SILVER PROJECT

SECRETARY'S ENVIRONMENTAL ASSESSMENT REQUIREMENTS

BIODIVERSITY

Assessment and strategy to offset any residual impacts of the development.

HERITAGE

An assessment of any likely Aboriginal and historic heritage (cultural & archaeological) impacts, having regard to the Office of Environment & Heritage requirements.

TRANSPORT

Likely transport impacts including capacity, condition, safety and efficiency of local and state road networks.

VISUAL

Impacts on private landowners and key vantage points in the public domain, with particular attention paid to new landforms and minimising light impacts.

HAZARDS

Any likely risks to public safety including bushfire risks and the handling and use of any dangerous goods.

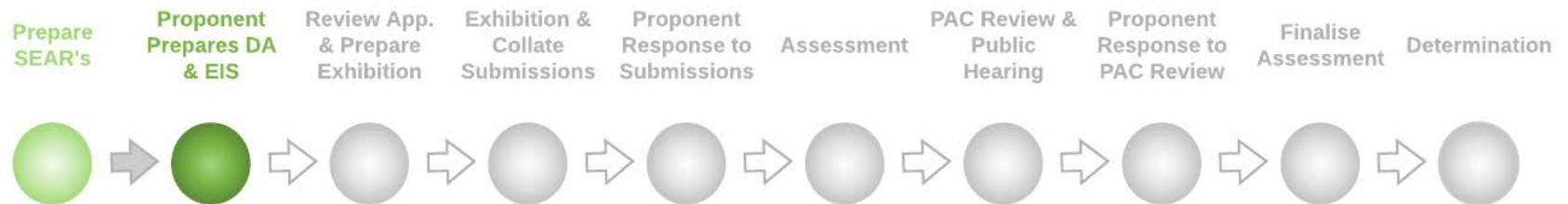
SOCIAL & ECONOMIC

Assessments of likely social and economic impacts of the development including the significance of the resource, economic benefit to the state and region and demand and provision of local infrastructure and services.

ALSO REFER TO 14TH NOVEMBER 2016 CCC MEETING PRESENTATION WITH FURTHER DETAILS ON SEAR'S, ENVIRONMENTAL IMPACT STATEMENT, COMPLIANCE AND "ITEMS WE WILL ADDRESS".

BOWDENS SILVER PROJECT

ENVIRONMENTAL IMPACT STATEMENT DEVELOPMENT AND ASSESSMENT PROCESS



COMMUNITY

- “Open Door” policy for all in the community.
- Comprehensive Bowdens Silver website with Q & A portal.
- Direct contact with all neighbours, phone, email, mail, meetings.
- One on one meetings continue as the priority.
- Open Day 20th November 2016 – circa 50 attendees, 20 staff.
- Mailouts
 - 122 personal addresses for Newsletters, Aerial Survey notifications, Open Day invites.
 - Plus 168 addressees for wider area mailouts.
 - Fact sheets distributed through local newsagencies.
- Newspaper and other media notifications.
- Active community involvement by all Bowdens Silver staff.

SPONSORSHIPS AND PARTNERSHIPS

- Mudgee Wombats Rugby
- Rylstone Kandos Show
- Mudgee Show
- Kandos Pirate Day
- Kandos CWA
- Lue Public School
- Mudgee District Netball Association
- Lue Darts
- Mudgee Endurance Riders
- Waratahs v Brumbies Rugby in conjunction with MWRC
- Over 40 local businesses and contractors help at Bowdens Silver

BOWDENS
SILVER



FARM

- Freehold position 1500 hectares (3700 acres) (100% and optioned).
- Over 600 hectares (1500 acres) pasture improved.
- Running both Merino sheep (1,000) and Black Angus and Black Angus cross cattle (90).
- Added 760 Merino sheep in February.
- Pest eradication and weed control program continuing.
- Bushfire strategy development.
- Renovation and occupancy of available housing on the Bowdens site.

EDUCATION PROGRAM DEVELOPMENT

- University of New South Wales and Macquarie University – under graduate and post graduate programs.
- Lue Public School – IT sponsorship, water resources, garden, educational support.
- Currently discussing educational opportunities with various local primary and secondary schools.
- Strong training and support policy for staff.
- Local trainee program opportunities to be commissioned with transition into mine development (including with local secondary schools).

BOWDENS SILVER POLICY DEVELOPMENT

Bowdens Silver is committed to being a responsible and ethical corporate citizen within the communities it operates. It is dedicated to ensuring that environmental practices, health and safety, community protection and staff performance is always striving to be best practice.

The basis of Bowdens Silver achieving this includes:

- Exemplary standards in commitment to all relevant legislation, regulations and other laws.
- Continual assessment and development of internal policies for the protection of the environment and the communities in collaboration with stakeholder, the community and regulatory authorities.
- Compliance and accountability of management, staff and contractors to ensure workplace practices are in line with statutory requirements and internal policies.
- An understanding that all our activities will be conducted to the highest of standards by appropriately trained staff with thorough foresight and planning.
- Regular training of staff and awareness sessions on potential environmental, community and health and safety impacts.

BOWDENS SILVER POLICY DEVELOPMENT

Major environmental and community items of policy development as part of the Environmental Impact Statement (EIS) include;

- A continued “Open Door” policy for all interested stakeholders and community members.
- The protection and continued strong viability of the village of Lue for community members to reside in, socialise in, work in and be proud of.
- Health and safety protection for the community is the most critical issue.
- EIS will be detailed, clear and concise on health and safety.
- Independent continuous monitoring of health and safety (including lead) of the community and staff.
- Availability of on-site medical emergency assets for the community.
- Continual open reporting locally on health and safety issues.

BOWDENS SILVER POLICY DEVELOPMENT

Continued...

- Protection of surface and ground water resources for the village of Lue and surrounds.
- No mining encroachment from the Bowdens Silver site.
- Highest mitigation standards and procedures with regards to noise, dust and visibility issues.
- Consideration of night-time mining activities as part of noise and visibility concerns.
- Site access from west of Lue will substantially minimise traffic through Lue village.
- Local availability of Bowdens Silver water resources for neighbours in drought periods (if available).
- Several homesteads on site to be upgraded and populated.

BOWDENS SILVER POLICY DEVELOPMENT

Continued...

- Comprehensive fire strategy on-site with full availability water resource, equipment and personnel for local community and authorities.
- Priority given to local employment including local employment training programs.
- Priority given to local business and services.
- Current strong education policy will expand with local public schools, high schools and tertiary institutions.
- Current strong sponsorship and partnership policy will continue with a clear focus on local activities and sports.
- Development of local charity and support programs .
- Responsible land management strategy including pest and weed eradication.

ACCOUNTABILITY

NSW Legislation strictly regulates all mining activities:

Environmental Planning and Assessment Act 1979 – Development Consent

- Requirements of environmental impact assessment - we **MUST** comply in all respects.
- Proponent makes binding commitments as part of the EIS.
- Public comment and input - consent authority reflects requested reasonable measures as conditions of a development consent.
- Comprehensive management plans and procedures required.
- Annual reporting and independent auditing every 3 years.
- EIS, commitments and additional requirements from consent authority become conditions of the Development Consent.
- Development Consent must be obtained before a Mining Lease and Environment Protection Licence can be granted.

ACCOUNTABILITY

NSW Legislation strictly regulates all mining activities:

Mining Act 1992 – Mining Lease

Mining Lease conditional on:

- **Additional consent conditions & commitments.**
- **Statement of corporate compliance and financial capability.**
- **Environmental performance history.**
- **Rehabilitation cost estimate and justification - basis of calculation of security bond.**
- **Annual review of security bond.**
- **Written consent of affected owners/occupiers.**
- **Separate requirements for rehabilitation defined by Dept. Resources and Energy (DRE).**
- **Environmental incident reporting requirements defined by DRE.**
- **Company declarations - company officers, ultimate holding company.**

ACCOUNTABILITY

NSW Legislation strictly regulates all mining activities:

Protection of the Environment Operations Act 1997 - Environment Protection Licences

- EPL conditions will replicate consent conditions with respect to air quality, noise, water discharges, blasting and waste management.
- Need to operate with a Pollution Incident Response Management Plan.
- Annual Return reporting on compliance with EPL.

ACCOUNTABILITY

Commonwealth Legislation can regulate mining activities:

Environment Protection and Biodiversity Conservation Act 1999 – EPBC Approval

- Approval is required if the project is assessed to have a significant impact on any matter of environmental significance.
- A referral will be made to the Department of Environment and Energy with respect to the critically endangered White Box-Yellow Box – Blakely's Red Gum Grassy Woodland and Derived Native Grassland.

CULTURE AND MANAGEMENT

- Systems to identify issues.
- Training personnel to manage environmental issues.
- Monitoring & auditing performance.
- Publication of monitoring data.
- Culture of awareness and responsibility.
- Recruitment policy - corporate ethics and values.
- Emphasis is placed upon progressive rehabilitation and continual improvement.

A faint, stylized topographic map with contour lines is visible in the background of the slide.

REHABILITATION

Establish a safe, secure and stable environment following mine closure:

- **Demolition of surface infrastructure/retention of useful infrastructure.**
- **Remediation of affected land.**
- **Capping of the tailings storage facility.**
- **Establishment of final landform with drainage controls.**
- **Geotechnical stabilisation.**
- **Removal of ore pads.**
- **Amelioration of soils for revegetation.**
- **Revegetation works.**
- **Monitoring rehabilitation progress.**

REGULATORY SYSTEM FOR REHABILITATION

Mining Operations Plan (MOP) requirement of a Mining Lease:

- Objectives & criteria for rehabilitation - must be met to recover security bond.
- Rehabilitation plans with emphasis placed upon progressive rehabilitation for entire life of mine.
- Defined key risks and opportunities to achieve successful rehabilitation.
- Range of risk - based rehabilitation controls and methodologies.
- Detailed monitoring to measure performance and compliance.
- Company required to comply with the Rehabilitation Code and Conditions of Mining Lease.

Must report on performance of rehabilitation annually against MOP & development consent conditions.

DIRECTORS RESPONSIBILITIES

FIDUCIARY

- Directors are accountable and have a duty to exercise care and diligence in discharging their duties and to act in good faith.
- Directors are responsible for evaluating and balancing risks presented by the economic and corporate environment.

IMPARTIALITY

- Directors are required to avoid situations where personal interests conflict with their duty to the Company.

LIABILITY

- Directors may be held personally liable for breaches of the law by the Company.

DIRECTORS RESPONSIBILITIES

COMPLIANCE

- Directors are responsible for ensuring the Company continues to comply with all the regulations and laws which apply to the Company's operations.
- These include laws relating to work health and safety, the environment and taxation.

PENALTIES

- There are severe civil and criminal consequences for directors if they are reckless, negligent or fraudulent or intentionally dishonest in their duties.
- Directors may be liable for substantial fines, or imprisonment, or both and be personally liable to compensate the company or affected parties for any loss or damage they suffer.

DIRECTOR RESPONSIBILITIES

Mining Act 1992 offences:

- Providing false/misleading information.
- Contravention of mining lease conditions.
- Aiding/abetting the committing of offences.
- Liability of Directors for offences by corporation.
- Liability of Directors as accessory to offences by corporation.

Protection of the Environment Operations Act 1997:

- Liability of Directors for offences by corporation - executive liability.
- Liability of Directors as accessory to offences by corporation.

Other NSW and Commonwealth laws.

Contact

W: www.bowdenssilver.com.au

E: information@bowdenssilver.com.au

T: (02) 6373 6420, after hours phone (02) 8960 6111

A: 68 Maloneys Road, Lue NSW 2850

M: P.O. Box 1115, Mudgee NSW 2850

