

Community Consultative Committee Meeting Minutes

**Bowdens Silver Pty Limited
("Bowdens")****Exploration Community Consultative
Committee (CCC)****Meeting Minutes** Tuesday 5 September 2017**Independent Chairperson:** Margaret MacDonald-Hill**Minute Taker:** Sally Mayberry**Next Meeting:** This is the final meeting of the current committee.

Meeting Commenced: 3:33pm

Meeting Ended: 5:33pm

Attendees:

Margaret MacDonald-Hill (*Chairperson*)
Sonia Christie
Tom Combes
John Lydiard
Mick Boller (*LAG Representative*)
Anthony McClure (*Managing Director Silver Mines Limited, Bowdens Silver P/L*)
Sally Mayberry (*Bowdens Silver P/L*)
Jane Munro (*Bowdens Silver P/L*)
Keith Perrett (*Chairman Silver Mines Limited*)
Julie Robertson (*MWRC*)
John O'Neil (*MWRC Representative*)
Mike Young (*Director of Resources and Energy, Department of Planning and Environment*)

Community Consultative Committee Meeting Minutes

Agenda Topic	Discussion
Welcome	The Chair declared open this the final meeting of the Bowdens Silver exploration CCC and welcomed members and invited guest speaker, Mike Young, to the meeting.
Apologies	Brett Maker Tony Sheridan
Declaration of Interest	Margaret MacDonald-Hill (MMH) declared paid position as the independent Chair; also chairs a number of CCC's and is a Member of the Mine Subsidence Board. Tom Combes declared position as the President of the Lue Action Group
Business arising from previous minutes	Comment regarding surprise that Bowdens Silver has taken credit for the open day and the number of participants (50-60 people), when the majority were protestors. MMH: Questions re more open days-to be clarified in the Bowdens Silver business update. MMH: Questions re the safety of proposed Lue Road take off point for new mine access road. To be clarified in the Bowdens Silver business update. Keith Perrett queried Tom Combes on his position with the Lue Action Group citing that Tom Combes announced immediately prior to the previous CCC meeting that he had resigned as a member and President of the Group. Tom Combes explained that although he had resigned prior to the last CCC meeting, he was reappointed as a member and President days later. MMH: Website Question & Answer portal has been uploaded to the website
Correspondence	<ul style="list-style-type: none"> Chair noted an additional item not included on Meeting Notice and Agenda; Tony McClure sent an email to the committee on 25/7/17 advising on the new SEARs requiring formation of a new CCC under Department of Planning & Environment Guidelines.
Reports	<p>Tony McClure and Jane Munro – Bowdens Silver business update. Presentation attached to the minutes.</p> <p>Comment regarding the change in location of water storage and reduction in water storage size on site. Response: Water sourcing is currently being worked through with Jacobs and WRM Water and Environment (EIS water consultants). On site water capture is not sufficient for the needs of the operation. Groundwater bores on site, tailings water recycling and external sources are options being considered.</p> <p>Comment regarding power supply to the mine site. Response: The approval process for power is outside of the Development Application and EIS and will be dealt with separately. Power supply options are currently being defined. There will be details of the proposal within the EIS.</p> <p>Comment regarding the status of definition of biodiversity offset areas. Response: Surveys are continuing to gather data for input into the model which will ultimately define the offset requirements for the project. The Company is considering all available options for</p>

Community Consultative Committee Meeting Minutes

biodiversity offsets.

Final comment from Tony McClure: Thank you to all participants for their contribution to the current CCC. Also thank you to Margaret MacDonald-Hill for her efforts as Chairperson.

Mike Young - Director of Resources and Energy.

Mr Young coordinates projects from coal, mineral mining, CSG, windfarms, solar farms, power stations, hydro power, pipelines and transmissions.

Mr Young explained in detail the current Department of Planning & Environment CCC Guidelines (and distributed hard copies). The Guidelines have been updated to apply to CCC's being set up prior to the submission of a Development Application.

Mr Young commented that the recent changes to the Bowdens Silver Secretary's Environmental Assessment Requirements (SEARs) was due to the advancement of the project moving into its Environmental Impact Assessment (EIS) and is no reflection on the current CCC, Chairperson or the company. The steps of the Guidelines were outlined. Darryl Watkins has been appointed to Chair Bowdens Silver CCC henceforth.

Bowdens Silver is required to advertise locally (28 days) for the CCC roles. The company has no role in the CCC selection process. There are criteria in the new guidelines regarding CCC representatives. Every CCC member must sign a code of conduct and interests must be declared.

The CCC members are appointed by the Secretary of the Department of Planning and Environment.

Following CCC representative appointment, the Chairperson will seek to convene the first of regular meetings.

The first meeting is likely to be convened within 3 months. The committee will then decide the frequency of the meetings thereafter. The EIS, due early 2018, will be put on public exhibition for longer than the minimum 30 day period. Public meetings will be held during this period. A whole of government assessment will be made on the EIS. Key issues will be focused on and independent experts will be engaged.

Mr Young supports Bowdens Silver's initiative to better inform the community by preparing and delivering expert report summaries to the community. However, he does not expect these to be sent to Government, as the Department will wait until the EIS is lodged. The Department assures its commitment to the community regarding the nature and scope of concerns regarding the Bowdens Silver project.

Q: Did the final guidelines differ much from the draft version?

A: A few things were changed but nothing of significance.

Q: Has a decision been made on the minute taker for the new CCC?

A: The Chairperson will be responsible for the appointment of the minute taker

Community Consultative Committee Meeting Minutes

	<p>Q: Would the Department consider having the EDO available to communities for future projects?</p> <p>A: The EDO has its own role – it would be difficult for the Department to support. The Department/whole of government assessment would be willing to organise and attend community meetings. House to house meetings will also be planned as part of the assessment.</p> <p>Q: Members of the community are concerned they won't have time to review the EIS within the allotted timeframe, especially considering the timing of submission with fire season.</p> <p>A: The proponent can submit the EIS documentation at any time. The Department has an internal policy of not exhibiting between mid-December and Australia day, due to the Christmas period breaks.</p> <p>Q: Can the EIS review period be increased?</p> <p>A: The statutory minimum is 30 days. On a case by case basis, alternatives can be considered. Six weeks is usually given on project such as the Bowdens Silver project. The Department is not in a position to fund any third-party reviews for the community.</p>
General Business	<p>Mick Boller speaks to a document (attached to the appendix).</p> <p>The Chairperson thanks the community members for their time and contributions, the council for the use of the facilities, the company for extensive information and the minute taker.</p> <p>Bowdens Silver thanks the community members for their time and their input into the project, the Chairperson and the minute taker.</p>

Community Consultative Committee Meeting Minutes

Table 1: Questions and comments arising during the meeting and additional clarification

Question	Answer and Comments
Will baseline blood tests be organised?	Baseline blood testing will be done if EnRiskS (the contracted environmental health specialist engaged by Bowdens Silver) identifies that it is needed.
Was the recent project information sheet emailed to the CCC members?	The project information sheet was mail delivered. It will be emailed to CCC members.
Will there be a pit redesign based on the IP anomaly (if something is found)?	Given the depth of the anomaly, if there is a discovery, it is likely that any mining would be underground. It will not be part of the current development application as it is years away from any decision regarding mining.
Previous proponents at Bowden's had other mining projects to finance the Feasibility Study stage of the development which raises concerns within the community of the ability of Silver Mines Limited to meet regulatory requirements and rehabilitation at this exploratory stage. In a letter to Silver Mines Limited from the ASX dated 2nd August it said, "Silver Mines Limited may not have sufficient cash to continue funding its operation." Can you elaborate on your reply letter to the ASX dated 8th August on your "ability to raise these funds?"	<p>The parent company of Bowdens Silver is an exploration company that will later become a production company. The company relies on the general equity markets and current shareholders for funding up until project development.</p> <p>For project development, project financing is the normal course for such developments. The company's management has considerable experience in both exploration and mining finance.</p> <p>At the moment, environmental bonds are in place for rehabilitation of current works and would be substantially expanded for mining operations.</p>
How is rehabilitation assured should the business fail?	A rehabilitation bond is submitted to the appropriate department prior to undertaking any activities. The bond is a scheduled sum equivalent to the level of activity and is held by the department until rehabilitation is proven complete. The bond is drawn upon should a company fail and is designed to incorporate inflation, differing rehabilitation needs of sites and coordination fees.
Has the department changed its views on backfilling voids?	The Division of Resources and Geosciences oversees this aspect of NSW mines. It is a relevant consideration during the review process. Often a different approach is taken in minerals mines due to the nature of the activity.
What is happening about the rehabilitation and biodiversity offsets of the tailings and waste rock emplacement?	Biodiversity offsets are a major aspect of the EIS. Consultants have been engaged to determine the ecology and offset types. A new model has been developed. All parameters of biodiversity are run through the model. Data is still being collected for input into the model. Once the model is run, Bowdens Silver will have a determination of what

Community Consultative Committee Meeting Minutes

	offsets are needed.
--	---------------------

Appendix 1: Bowdens Silver CCC Project Update Presentation

Appendix 2: Mick Boller's statement to CCC



BOWDENS **SILVER**

Community Consultative Committee

5th September 2017

BOWDENS
SILVER

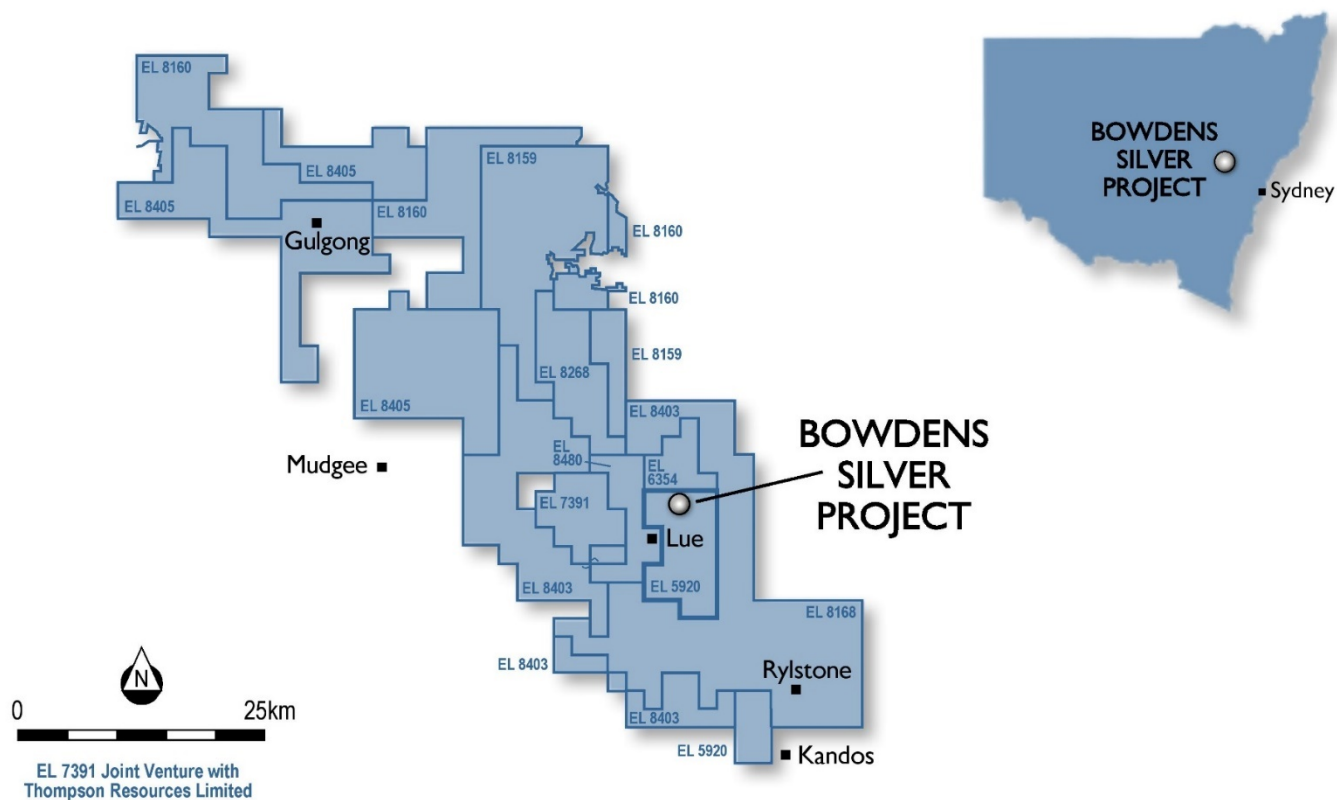
EXPLORATION UPDATE

- The Permian volcanics of eastern Australia contain high-grade, gold, copper, silver and base-metal deposits.
- The Bowdens Silver Project is a **SILVER** rich system but has geological affinities to **GOLD** and **COPPER** rich deposits such as Mt Leyshon and Mt Carlton.



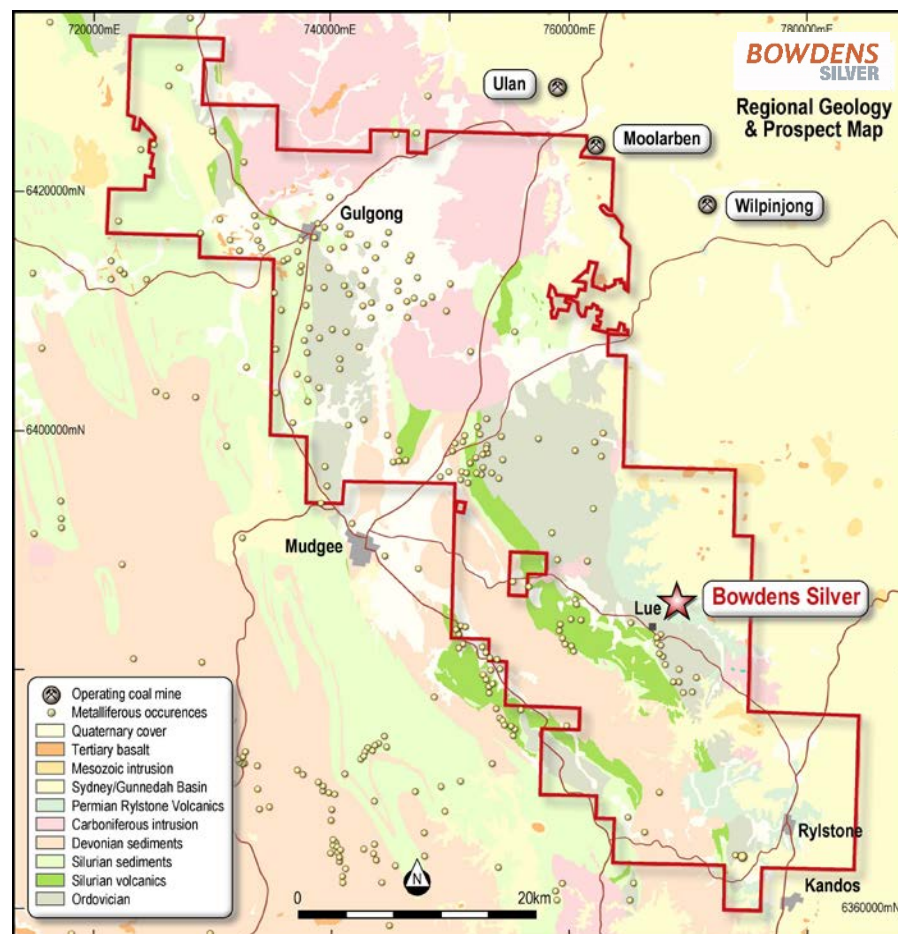
EXPLORATION UPDATE

- Exploration Licence 5920 renewed for 6 years to 30th January 2023



EXPLORATION UPDATE

- Extensive tenement holding (1,654 km² = 408,000 acres).
- Northeast corner of Lachlan Fold Belt, coal bearing Sydney and Gunnedah basins to the north and east.
- Wide range of prospective deposit types over different time periods (Siluro-Devonian, Carboniferous, Permian).
- Bowdens Silver epithermal, base metal Volcanic Massive Sulphide, Orogenic Gold, Intrusion Related Porphyry.



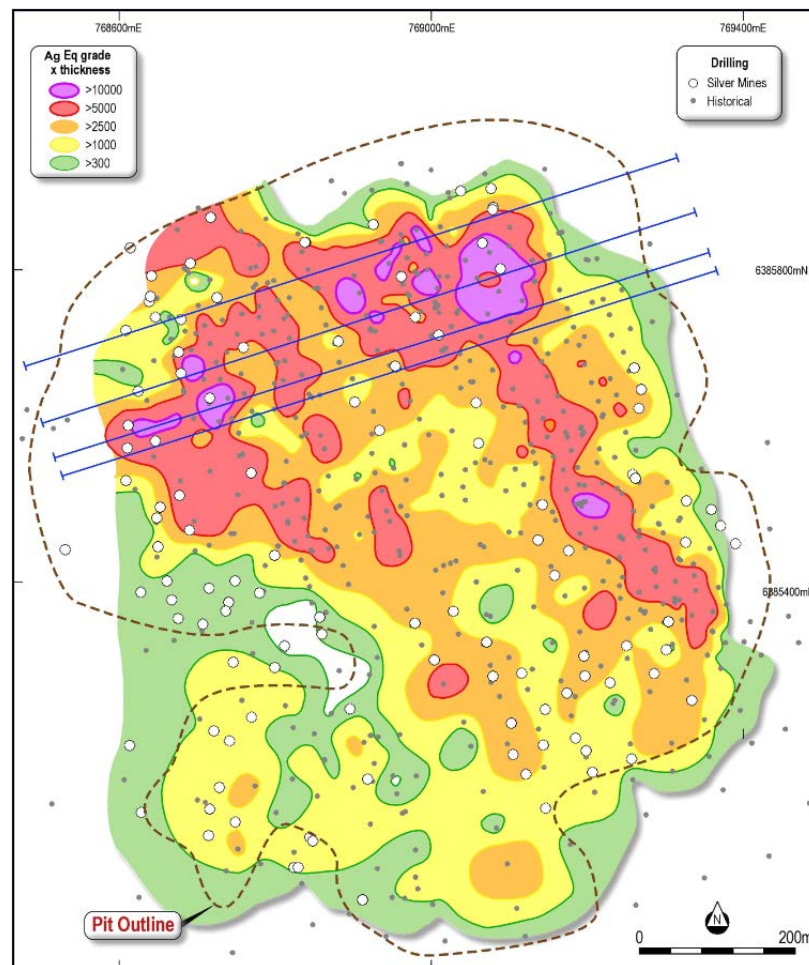
EXPLORATION UPDATE

Bowdens Silver's drilling has focused on:

- Both infill and extensional drilling;
- Oriented core drilling which enables a detailed structural interpretation of the deposit;
- Drilling intersecting basement Ordovician rocks resulting in new discoveries at depth; and
- Metallurgical drilling which is now complete.

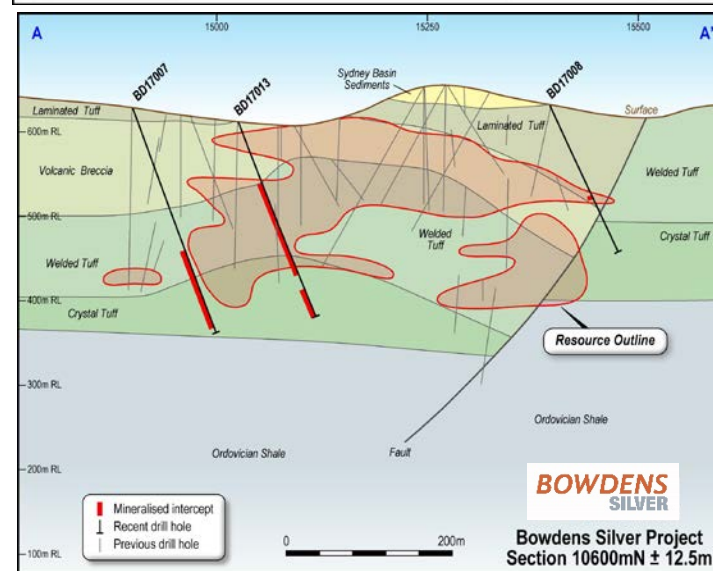
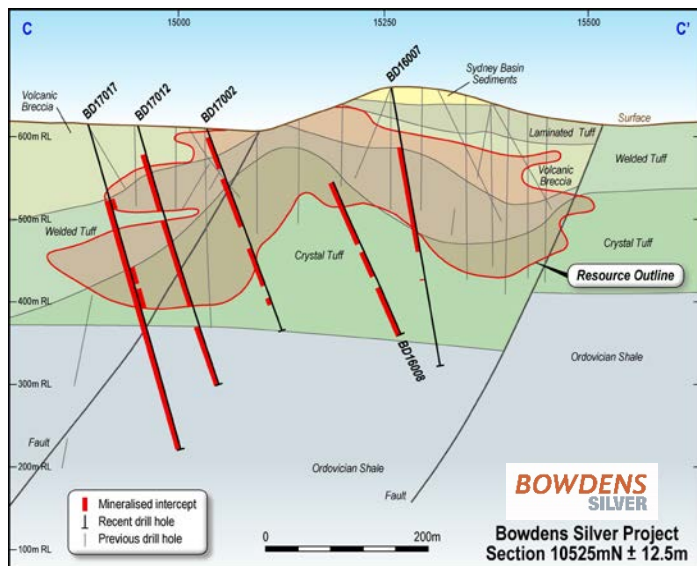
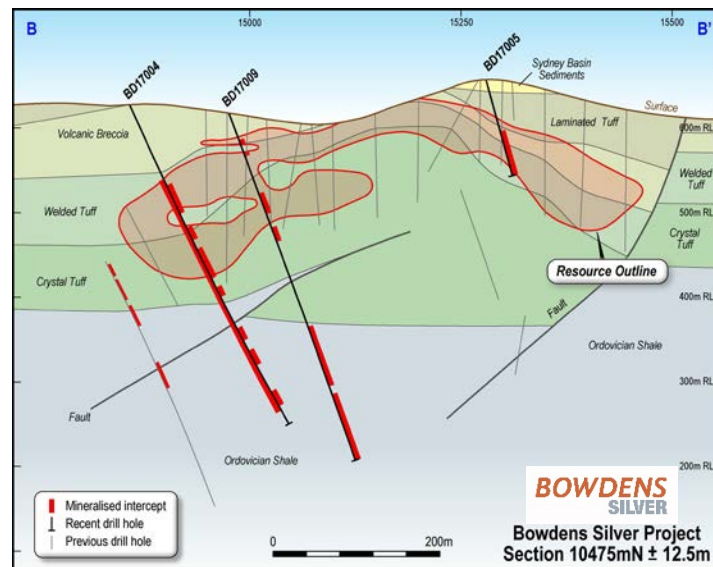
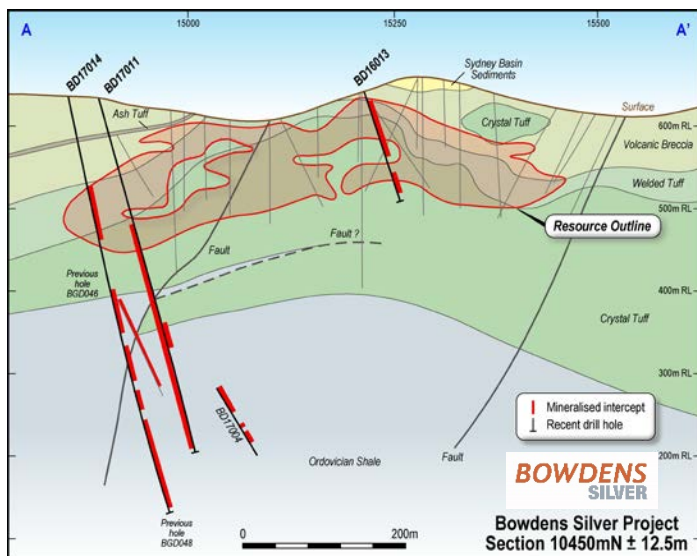
Company	DD	RC	Total
CRA, Silver Std, Golden Shamrock	8,764	40,965	49,729
Kingsgate	6,146	12,785	18,931
Bowdens Silver	11,898	10,063	21,961
Total	26,808	63,813	90,621

Total drilling on the project



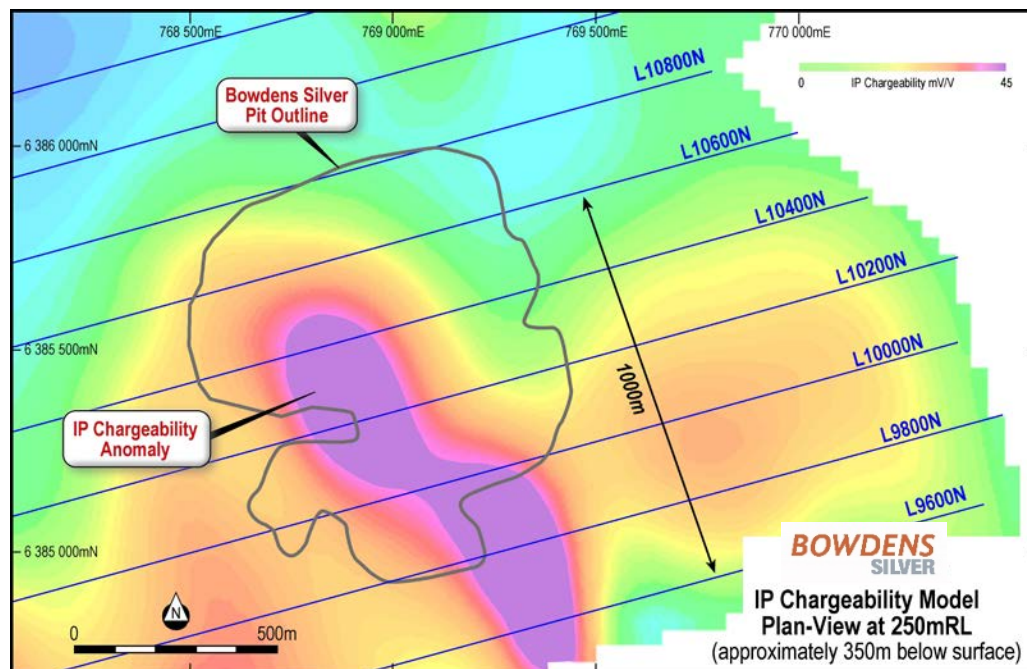
BOWDENS
SILVER

EXPLORATION UPDATE

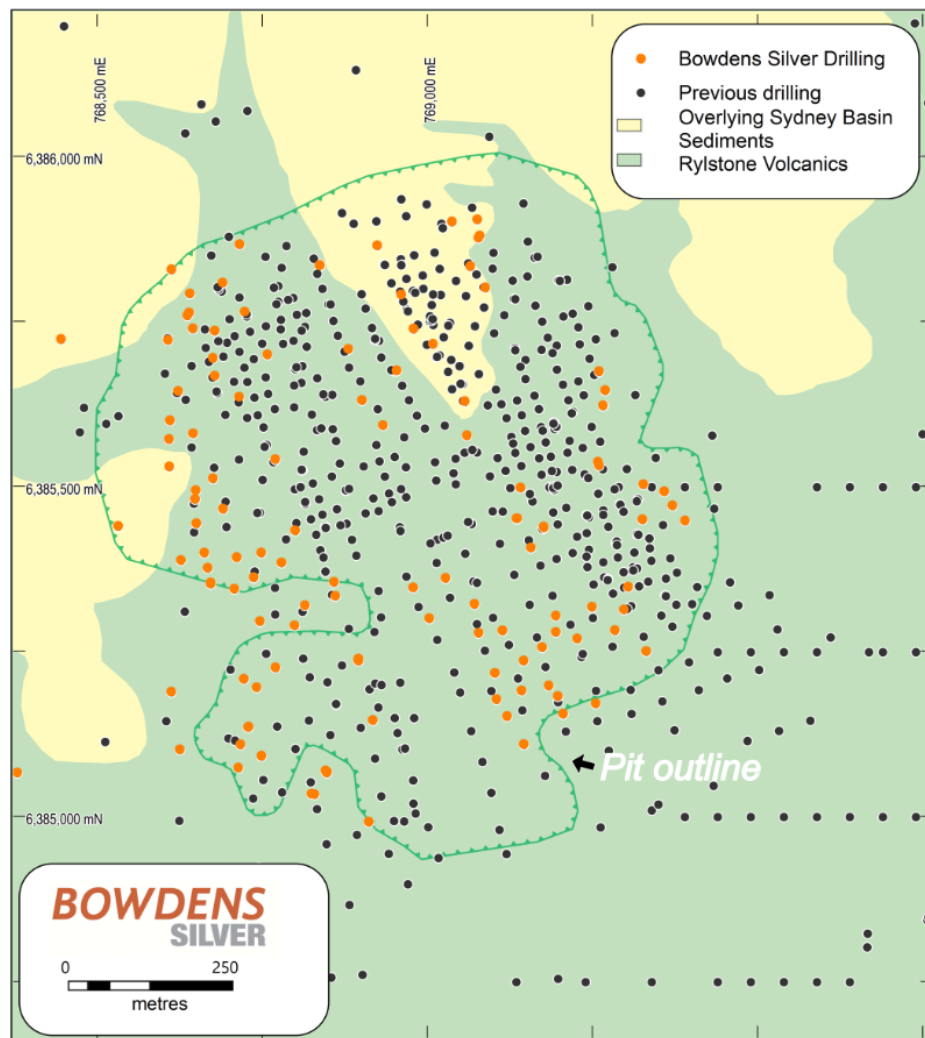


EXPLORATION UPDATE

- Induced Polarisation.
- Tests the chargeability of the rock and is a potential indicator of disseminated sulphide minerals.
- Highly anomalous zone under the Bowdens Silver resource.



DRILLING – BOWDENS SILVER & HISTORIC



Bowdens Silver:

- 145 holes
- 21,961 metres
- 54% diamond drilling
- 46% percussion drilling

Total Drilling:

- 710 holes (RC & DD)
 - 90,621 metres
 - 30% diamond drilling
 - 70% percussion drilling
-
- Infill drilling for resource complete.
 - No complaints received from the community in over 10 months of drilling.

FEASIBILITY AND EIS UPDATE

Area of Study	Primary Consultant
<u>FEASIBILITY</u>	
Engineering	GR Engineering
Geology, mine planning, process design	AMC Consultants
Metallurgy	Graeme Campbell & Assoc
Tailings Storage	ATC Williams
Groundwater	Jacobs
Resource/Reserves	H & S
<u>ENVIRONMENTAL IMPACT STATEMENT</u>	
EIS Management	RW Corkery & Co.
Noise, Vibration & Blasting	SLR Consulting
Visibility	Richard Lamb & Assoc.
Air Quality	Ramboll Environ
Terrestrial Ecology	EnviroKey
Aquatic Ecology	Cardno
Soils and Land Capability	McKenzie Soil Management
Site Access	Barnson
Transport	The Transport Planning Partnership
Health Risk and Lead Management	EnRiskS
Aboriginal and Cultural Heritage	Landskape
Surface Water	WRM Water and Environment
Groundwater	Jacobs
Social Impact	Umwelt
Economic Impact	Gillespie Economics

ENVIRONMENTAL IMPACT STATEMENT

WHAT IS NEW?

- **New Secretary's Environmental Assessment Requirements (SEAR's) issued by the Department of Planning and Environment.**
- **Dated 15th August 2017 and valid for 2 years.**
- **Primary change is with the upcoming lodgement of the EIS, a new Community Consultative Committee will now be formed under the Department of Planning & Environment.**
- **An EIS summary booklet including details of specialist consultant findings delivered to community prior to EIS submission.**
- **Comprehensive independent peer reviews to be undertaken.**
- **With the review process, the EIS is now scheduled for completion in early 2018.**

WHAT INFORMATION IS COMING?

Bowdens Silver and its specialist consultants are continuing to progress through their respective assessment reports for inclusion in the Environmental Impact Statement (EIS).

The type of information that they will be able to provide to the community for discussion prior to the lodgement of the EIS includes:

NOISE – SLR Consulting

- Preliminary noise contours that display the predicted noise levels at various stages of the mine's operations.
- SLR will explain what mitigation measures or controls Bowdens Silver would need to adopt to achieve the required noise level contours. Eg. earth barriers, equipment enclosures, noise control equipment on mobile equipment, reduced equipment operating hours and dedicated waste rock placement areas during the course of the day.
- The predicted noise levels would be assessed under a range of meteorological scenarios including temperature inversions and winds.

WHAT INFORMATION IS COMING?

AIR QUALITY – Ramboll Environ

- Preliminary air quality contours will be presented displaying the predicted air quality at various stages of the mine's operation. The key contour is most likely to relate to the 24 hour PM₁₀ (particulate matter 10 micrometers or less in diameter) concentrations.
- Ramboll Environ will explain mitigation measures required to achieve health based criteria. Eg. road watering, dust suppression on crushers and screens, strategically positioned barriers to limit dust lift-off and equipment enclosures.

SURFACE WATER – WRM Water & Environment

- The features of the surface water system in the vicinity of the mine site (e.g. Blackmans Gully, Prices Creek, Walkers Creek and Hawkins Creek) will be described as well as the regional surface watercourse, Lawsons Creek.
- Mitigation strategies designed to avoid or minimise impacts would be presented, particularly with respect to dry periods and flood flows (a modelled flooding map will be displayed).
- Other surface water issues to be addressed would include:
 - The impacts upon existing water quality in the local and regional watercourses;
 - Diversion of clean water around mine components; and
 - A site water balance to identify the strategy to manage water from all sources.

WHAT INFORMATION IS COMING?

GROUND WATER – Jacobs

- The results of the groundwater modelling and its calibration with local bores will be presented.
- The report will quantify the impacts to the local and regional groundwater system over the life of the project and beyond so that the following key areas are identified, assessed and appropriate mitigation strategies are developed to manage:
 - Impacts to standing water levels (drawdown);
 - Groundwater inflow during and after open cut development; and
 - Impacts to groundwater quality.

TRAFFIC – The Transport Planning Partnership

- Current number of light and heavy vehicles using the roads in the Mudgee-Lue-Rylstone district and changes that would occur throughout the construction and operational phases.
- The effectiveness of the new proposed access road will be outlined with respect to minimising increases in traffic levels through Lue.
- A comparison between the existing and proposed traffic levels and the range of mitigation measures Bowdens Silver would adopt to minimise impacts on locals, road users and residents.

WHAT INFORMATION IS COMING?

ECOLOGY – Envirokey

- Detailed maps will be displayed depicting the vegetation communities within the mine site and locations where threatened fauna species have been detected.
- Information will be presented regarding the biodiversity value of the areas to be disturbed and the management measures to be adopted including minimisation of disturbance within high biodiversity areas, implementation of a biodiversity offset strategy for unavoidable disturbances, and the rehabilitation strategy for the disturbed areas.

HEALTH & LEAD – EnRiskS

- Detailed information will be available on the potential human health risks, such as those associated with air pollution (including lead), noise, vibration, and water, the available baseline concentrations/condition for the potential risks, identification of the exposure pathways, a toxicity and response assessment in comparison to relevant guidelines and criteria, and a quantified assessment of human health risk.
- The methodology and approach to the assessment will be explained as well as the principal assumptions relied upon.

SOCIAL IMPACT ASSESSMENT


- **Social Impact Assessment currently in progress by Umwelt.**
- **Project Information Sheets**
 - Two information sheets distributed to all mailboxes in Lue, Rylstone, Kandos and surrounding localities.
 - Outlined up-to-date project information, approval process and timeline, consultation to date and issues raised as well as call to action for any further community input.
- **54 one-on-one calls and face-to-face interviews by Umwelt and Bowdens Silver.**
- **Assessment continues**

SOCIAL IMPACT ASSESSMENT

Activities in progress or planned include:

- **Public School activity regarding living in Lue and future vision of the village;**
- **Historical society consultation;**
- **Local interviews - Lue, Rylstone, Kandos, Mudgee;**
- **Specialist information sessions to be held in conjunction with specialist consultants to present information and gather community views; and**
- **An EIS summary booklet delivered to residents prior to EIS exhibition.**

PROJECT INFORMATION SHEET – YOUR SAY



The image shows the cover of a 'Your Say' Project Information Sheet. At the top is a photograph of a dirt road winding through a rural landscape with trees and hills under a cloudy sky. The title 'Your Say' is written in large, white, cursive font across the middle of the photo. Below the photo, the title 'Project Information Sheet' is on the left and 'No.2 August 2017' is on the right. The main body of the sheet contains several paragraphs of text. On the left side, there is a vertical timeline titled 'Community involvement' with four circular markers for Jan-Mar, Apr-Jun, Jul-Sep, and Oct-Dec, each with associated activities. On the right side, there is a vertical text 'We are here'.

Project Information Sheet No.2 August 2017

In 2017, Umwelt Pty Ltd (Umwelt) were commissioned by Bowdens Silver to undertake a detailed Social Impact Assessment (SIA) for the Bowdens Silver Project located 2.5km northeast of Lue village in New South Wales (NSW).

If approved, the open cut mine will produce approximately 2 million tonnes per year of ore. The mine will recover principally silver with a proportion of accompanying zinc and lead.

The SIA considers how the Project has the potential to impact on people – their way of life, culture and community.

This process has a number of phases including:

- identification of community issues, needs and aspirations;
- assessment and prediction of social and economic impacts; and
- identification of strategies that outline how impacts may be effectively managed or enhanced.

An outline of the indicative planning and approvals process and current Project progress is below.

Over the past months, the Bowdens Silver and Umwelt team has been meeting with key stakeholders and community members locally and in the broader region to identify their issues/concerns/aspirations as part of the SIA program. This information sheet summarises the information collected through consultation with landholders and local residents residing in the Lue locality and identifies the perceived issues/impacts in relation to the Project. Approximately 54 stakeholders in the Lue area have been consulted to date. Our consultation activities will continue locally and throughout the wider community.

The consultation data is being used to further inform the suite of environmental assessment studies that are currently underway and to focus the social impact assessment for the Project. As the SIA program progresses, further consultation will be undertaken to provide local residents with outputs of the assessment studies and to identify and discuss possible strategies/solutions for reducing and enhancing project impacts.

In the following sections of the information sheet, some of the key outcomes of the consultation are summarised for further community comment and feedback. Both positive and negative perceived impacts have been identified and where relevant, quotes obtained through our interview process have been included to highlight the particular issues/impacts raised. Issues have been summarised to ensure that we have accurately reflected local Lue resident/landholder issues to inform the SIA program; so if you believe that certain issues have not been noted, then please let us know.

The information sheet also addresses some of the key questions that have arisen during our discussions with residents/landholders and local businesses and which were noted during the community information session held on Sunday 7 May 2017. Additional consultation is also occurring with other key stakeholders e.g. community groups, service providers, local and state government, political members, residents etc. more broadly within the Mid-Western Regional Council area, with this information also to be integrated in the final SIA report.

Community involvement

- Jan-Mar**
 - Environmental and Social Impact Assessment studies commence
 - Preliminary Field Studies
- Apr-Jun**
 - Continued consultation with local landholders and key stakeholders
 - Field studies continue
- Jul-Sep**
 - Community workshops to provide outcomes of key studies and to incorporate stakeholder feedback
 - Refine mine plans and complete assessment studies
- Oct-Dec**
 - Finalise EIS for submission and public exhibition

We are here

- Overview of the Social Impact Assessment process and progress.
- Summary of the key outcomes of consultation activities.
- Responses to key questions that were raised during discussions with residents and landholders.
- Commonly raised potential issues and quotes.
- Community's views on what they value within Lue.
- Views on future needs and wants.
- Feedback on consultation activities and preferences.
- Continued opportunity for interested stakeholders to get in touch with us.

FREQUENTLY ASKED QUESTIONS

We recently added a comprehensive list of FAQs to our website based on questions we have been asked during open days, interviews, information sessions and meetings.

Who is preparing the Environmental Impact Statement (EIS)?

I have heard that you are building a lead mine but also silver. What is it?

How big will the mine be?

How does the mine compare to Mount Isa and Broken Hill?

When will you stop adjusting the layout?

Will the mine operate at night?

What is your policy for sponsorships? Who do you sponsor?

What community guidelines do you fall under?

What is the Community Consultative Committee (CCC)?

Why did you remove the Department of Planning & Environment (DPE) Community Consultative Committee (CCC) Guidelines from your website?

What will happen to Bowdens Silver and the site if the proposal is not approved?

Does the company plan to get mine approval then sell the site?

With no prior experience, how can we be confident in Bowdens Silver's performance?

Who makes the decision for approvals?

What happens if the results from the specialists indicate that there will be an impact to the village?

What about the other metals, is Bowdens Silver assessing these?

How big is the mine compared to the coal mines?

How big will the buffer zone be?

Why isn't it going to be 8km like the coal mines?

What is your policy on protecting the environment?

How much dust will there be?

What will be in the air from the mine and where will the dust go from the mine?

How will you ensure people can sleep at night?

Is the noise logger microphone omnidirectional? i.e. able to pick up sound from all directions equally.

How will operational noise compare to the rock breaker already audible from the village? Or from the pub?

Would the mine consider moving the processing plant further north?

Will the groundwater and streams be affected by lead?

What will happen downstream if there is an extreme weather event?

Will the mine impact surface water levels and quality in Lawsons creek?

How will Bowdens Silver manage Acid Mine Drainage?

How will you control cyanide from entering Lawsons Creek and affecting my water supply?

What contaminants are likely to be discovered in the air and water from the mine?

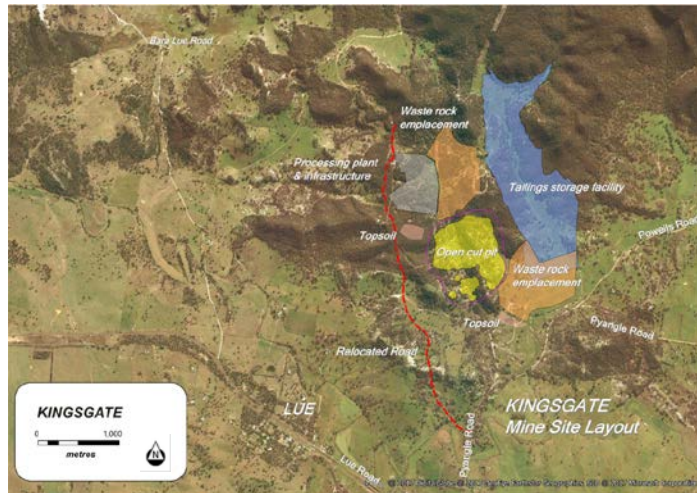
FREQUENTLY ASKED QUESTIONS

What options are you looking at for water supply?
What is the Tailings Storage Facility?
How do you prevent contaminants leaching into the earth underneath the TSF?
What happens if the TSF leaks?
How will you ensure my animals won't drink from the tailings storage facility, become contaminated then cross contaminate when they die?
How much cyanide will be used?
How much cyanide will end up in the TSF?
What contaminants will actually go into the TSF?
How many trucks per day?
How will you ensure responsible truck driver behaviour and road safety?
How will you decide where the road will be located?
Is there a plan to move the rubbish tip?
Will Bowdens Silver seal the access road?
What is involved in the rehabilitation process?
Will you fill the void?
Who will pay for rehabilitation?
What happens with all the land you have purchased? Will you continue to run a farm?
Will Bowdens Silver make sure their properties are maintained e.g. cattle grids?

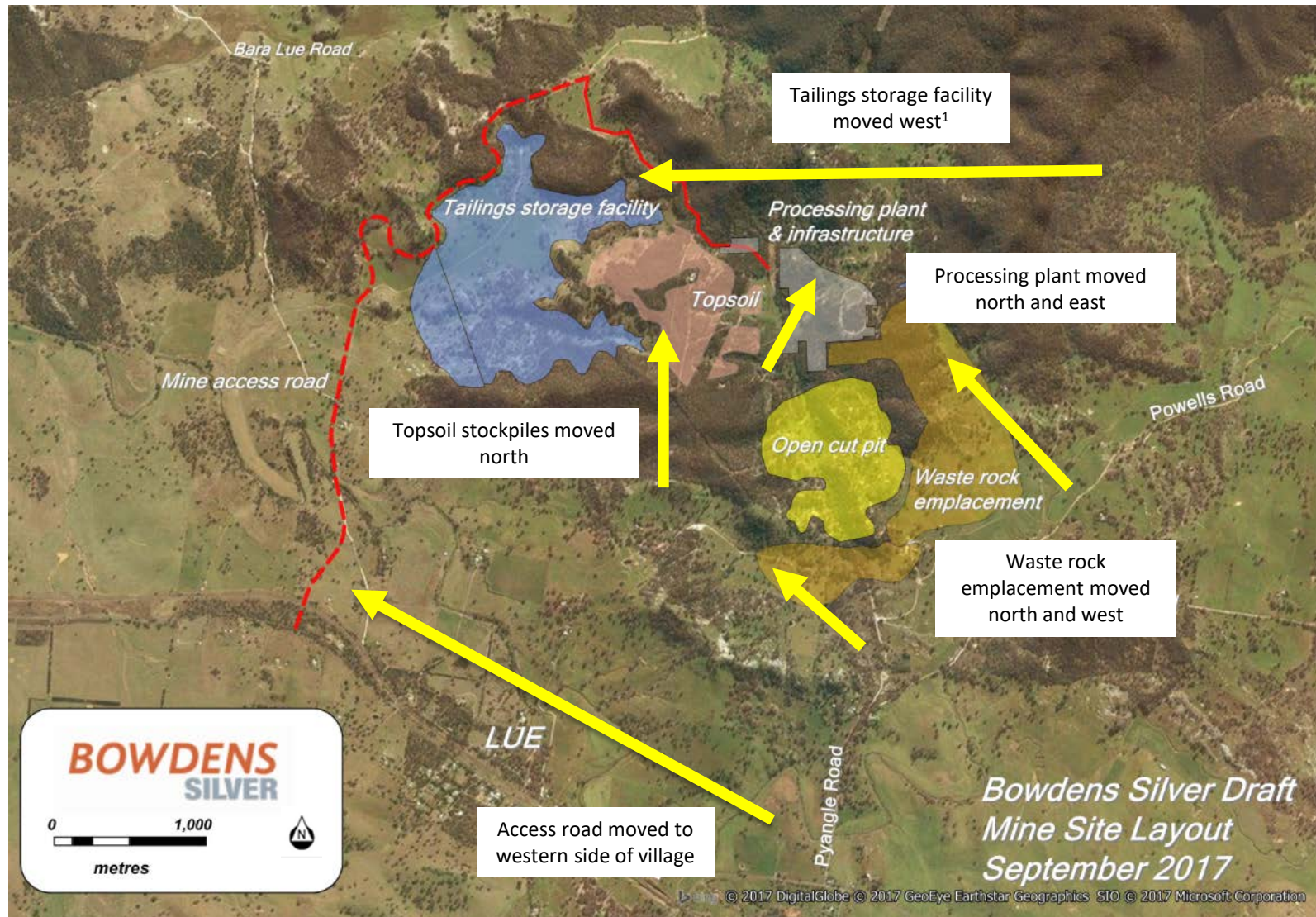
What is happening with all the houses you own?
Will the wind roses be available in the EIS?
Will the company provide weather data?
What health effects will people be exposed to from the mine?
Will the mine will result in lots more people on dialysis?
Would it be safe to live 10-15km from the mine?
Will the school have to close due to the mine?
Will our rainwater tanks and drinking water quality be compromised?
Will you be testing our rainwater tanks?
Can any exposure to lead compromise our health?
Will you be testing people's blood for lead?
What about the other metals, are we assessing these?
We see you are involved with local schools. Why?
How many people work at the site now?
How many jobs will you create?
Will you employ local people?
What training programs will you be offering for locals?
Will I see the mine from the Lue village?
After the mine is built will there be ongoing information for locals?
What are the advantages for Lue and the surrounding towns?
Will we end up like Wollar and other coal mine areas?
Will you eventually be buying out and closing the village?

Visit: <http://bowdenssilver.com.au/faqs>

DRAFT MINE SITE LAYOUT ITERATIONS

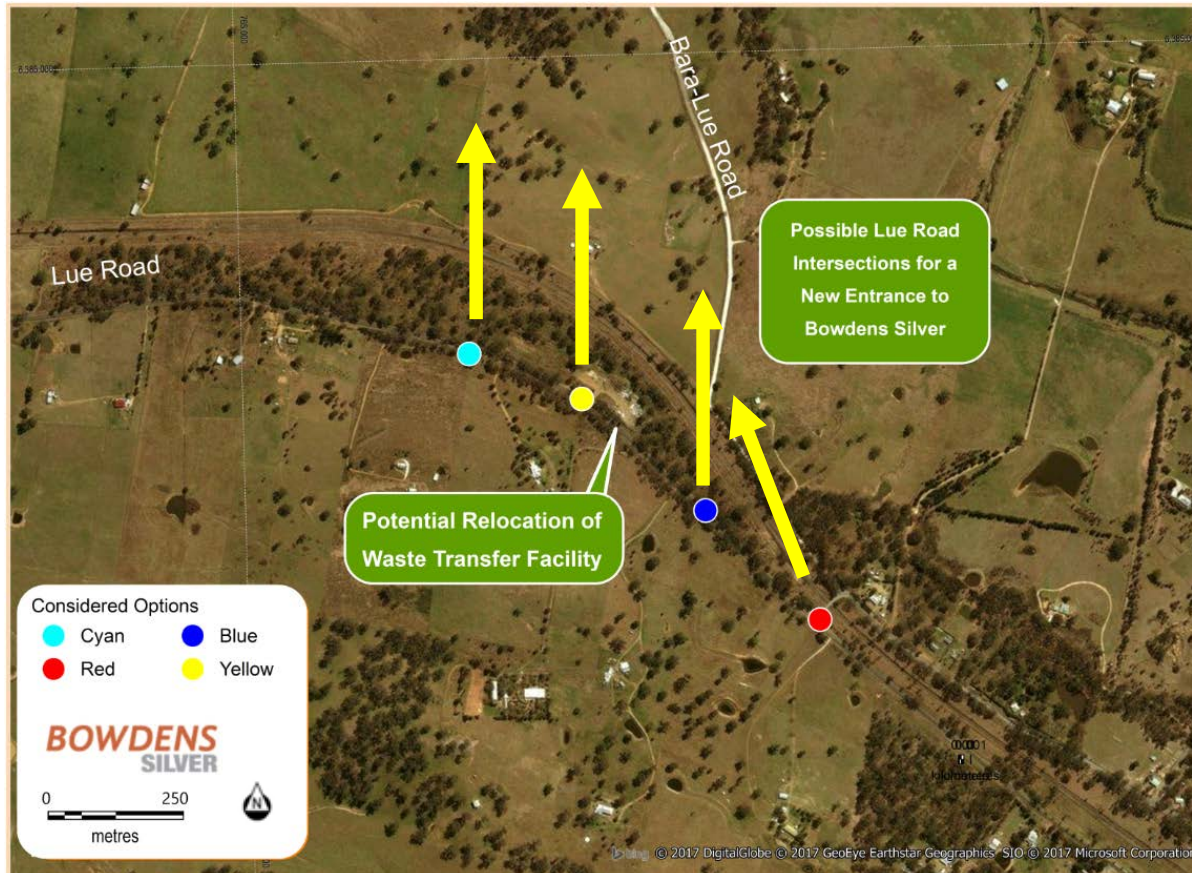


DRAFT MINE SITE LAYOUT – SEPTEMBER 2017



1. Pending land access in part

LUE ROAD INTERSECTION - FEEDBACK



RED

- Too close to Lue.
- Roadworks needed to remove crest to improve sight lines.
- Tight corners for truck transport.

BLUE

- Better sight lines.
- Away from houses.

YELLOW

- Dangerous corner.
- Waste transfer station entrance is already dangerous.
- Sight lines not sufficient.

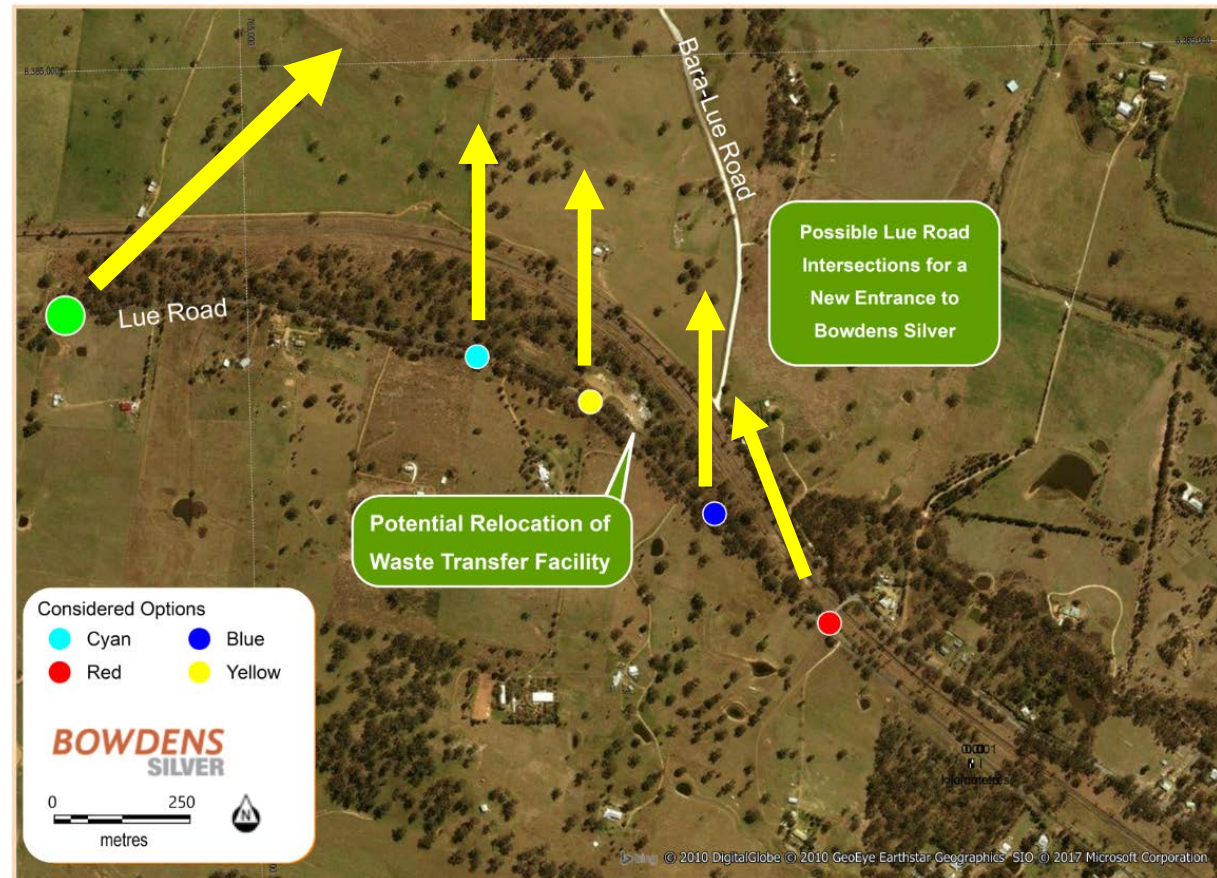
CYAN

- Better, but still on dangerous corner.

PREFERRED NEW LUE ROAD INTERSECTION


PROPOSED LOCATION

- Location identified incorporating community input.
- Approximately 2400m west of Lue Public School.
- Achievable safe intersection sight distances of 150m in both directions for 100km/hr zone.
- A Channelised Right Turn (CHR) and Basic Left Turn (BAL) intersection required.
- Road works required on both sides of Lue Road for approximately 280m.



WHAT'S NEXT FOR THE CCC?

- This CCC meeting is the last meeting during this stage of the Bowdens Silver Project.
- “Exploration” stage CCC under the Division of Resources and Geoscience (formerly the DRE) and now within the Department of Planning & Environment is now complete.
- With the upcoming lodgement of the EIS, a new CCC will now be formed under the Department of Planning & Environment guidelines.

A decorative graphic at the top of the slide featuring a light gray topographic map with contour lines and two shaded areas representing hills or mountains. Below the map is a thin horizontal line.

**THANK YOU TO EACH CCC MEMBER
FOR THEIR PARTICIPATION AND
COMMUNITY EFFORT IN THE
CONTINUED DEVELOPMENT OF
THE *BOWDENS* PROJECT
SILVER**

I reflect with great regret that I have spent part of the last 6 years involved in the Kingsgate CLG and Bowdens CCC, a charade that is concocted to look like a consultative body but which serves to drip feed information that has already been decided rather than to facilitate real and honest community consultation. The many, many hours spent preparing and researching prior to meetings, and recording, reflecting and following up afterwards have proven to be wasted hours. I realised during the tenure of Kingsgate that the CLG/CCC process was designed to control and slow down the flow of information back to the community rather than to hasten it. The CCC acts as a very efficient funnel and much that is raised in this forum never gets addressed. It is in fact a means of avoiding rather than providing the scrutiny of mining proposals that the Department of Planning claims to support.

It was recently suggested in this forum, in response to a concern raised by a community representative, that answers to community concerns could be found by reading SVL newsletters, or searching the website. A direct response could have been given here but a direct response was avoided. It was also implied that it was the responsibility of the unpaid community representatives on the CCC to pass SVL information back to community members.

Reports of monitoring conducted by SVL, in Powerpoint presentations to the CCC, have included inaccurate and misleading information. In my own case, no water or noise monitoring has occurred on my property since the sale of Bowdens to SVL. On maps presented to the CCC, the top water level of a planned Water Storage Facility encroached on land leased by my family. There was no consultation with my family before this occurred. The proponent has been providing conflicting messages according to the targeted audience. Locals are constantly told of a smaller, less intrusive project. The ASX and Mudgee Chamber of Commerce were informed of a broad and diverse project with satellite deposits scattered over a wide area.

In my 40 years in the Mudgee and Lue community, I have been involved in many work related, community, political and sporting groups, including Mudgee Pony Club, WA School Sport Executive, Bingman Landcare, Mudgee Softball Association, NSWCHSSA, Paterson FEC, Castlereagh SEC and the Guide Dogs Support Group. Every group, without exception, had a Constitution, By Laws, standing orders. Yet we have been asked to sit in a forum where decisions are supposedly made following the rules of "commonsense". The "commonsense rule book" has been used to support arbitrary decisions and to ignore other issues. The arbitrary exclusion of community members as visitors is one example. The attempt on spurious grounds to exclude community representatives Tom Combes and John Lydiard from the last meeting is another.

I do not envy the task which faces the Chair at these meetings. A structure wherein the Chair is selected, engaged and paid by the proponent does not lend itself to impartiality. That State Governments and various Departments have initiated and supported such an arrangement, not just here but in every community affected by mining developments, shows that community concerns are not treated seriously.

Despite repeated calls by committee members for independent minute takers to be used, that has only ever occurred in one meeting, which was the final KCN CLG meeting. If the playing field was an even one, this might not be an issue. I must stress that preparation of the minutes for presentation in the final form is the issue here, not the person who took the notes during the meeting. My request to the Chair to be able to see both the draft minutes as they stood at the close of a meeting and the final edited version was refused.

Amendments to minutes that I have sent after every meeting have been routinely dismissed. Dissenting views on this CCC are ignored or minimised. The attempted exclusion of two Lue community representatives did not appear in the last set of minutes. Community representatives insisting on accurate minutes are portrayed as unreasonable and obstructionist. The final minutes, which one presumes are read by someone overseeing the process in the DPE will not have properly reflected the very real community concerns which have been raised by community representatives but ignored in this sham process.

When I nominated for the CCC, my aim was to do my best to ensure that residents of Lue and surrounds were treated fairly. I have raised issues and concerns that people have brought to me. I am constantly told that SVL has an open door policy and anyone can come and ask questions. Expecting answers to be delivered in writing is seen as unreasonable and is ignored. On 7th February 2017, as then President of LAG, I was asked to submit a series of questions to Tony McClure. I have sent those questions to Tony McClure by email 3 times. I also sent them to the Chair and to Keith Perret. As of 4/9/2017, I have still not received a written answer to even one of the questions raised, despite the DPE stating that stakeholders must be engaged in a way that suits those stakeholders.

I have often repeated the story that a representative of the Department of Planning, in a meeting with community members at the facility previously known as Parklands Resort in Mudgee, three times said that his role was to "facilitate the approval of the project". When shocked community representatives asked whose role it was to look after the community, the Departmental officer had no answer. Any faith the community members might have had about the DPE fairly representing them was shattered. When LAG members met with the then Minister Rob Stokes and Troy Grant in these rooms, both expressed surprise and said that this was not the brief of the Department. The Department of Planning and Environment Twitter account says "we exist to make peoples lives better by making NSW a great place to live and work".

Still, the question asking who in Government is responsible for looking after those residents unfortunate enough to live on the fringes of the proposed project remains unanswered. Again I ask, which Government Department/entity has the responsibility for looking into and addressing the very real concerns of the residents who will bear the financial, social, health and emotional costs of any mining development near Lue.

From the beginning we have been told this project will benefit the community. Which community? Mudgee? Yes. Rylstone? Yes. Lue? Not so much. As always, the people who live in and around the proposed project are the ones who will be experiencing all the downsides. They will be paying much of the costs and receiving few or none of the benefits. I note from recent CCC minutes that largesse has been distributed to community groups – Netball \$10,000, Rylstone Show, Lue Darts, Mudgee Rugby Union – the biblical thirty pieces of silver. What grants have been made/will be made to the residents of homes in Lue? What kind of compensation can those residents expect?

Lest any of you want to claim that Lue is the only community with serious questions about proposed projects, a brief internet search will tell you otherwise. All over the State, communities are being ignored. No CSG Pilliga, No CSG Coonabarabran, No CSG Gilgandra, No CSG Narrabri, Northern Rivers, Knitting Nannas, Lock the Gate, Liverpool Plains, Watermark, Bylong, Wollar, Bulga, Sutton Forest, Gunnedah, Gloucester, Coonamble. They cannot all be dismissed as NIMBYs standing in the way of jobs. In a democracy such as ours, there is an expectation that we will all be treated fairly. Clearly, this is not happening.

Can this Lue community survive and thrive if the project proceeds? SVL tells us it can. The evidence before us, some of it very close to home, shouts that Lue, like Ulan, Wollar and Bylong, is finished.

Can this project proceed without contaminating air, soil, water, stock and human population? No similar project has been able to do that. What is the future for local businesses and the school? What will happen to domestic and agricultural water supplies? Temporary, laughable, "make good" arrangements for underground water loss and contamination are not an answer. No mining project has had a nil effect on water supplies. If SVL has discovered the way these obstacles can be overcome, they must immediately share that information with Lue and its surrounding community.

This Bowdens CCC has never truly addressed community concerns and the DPE has shown no desire to insist that it does.